

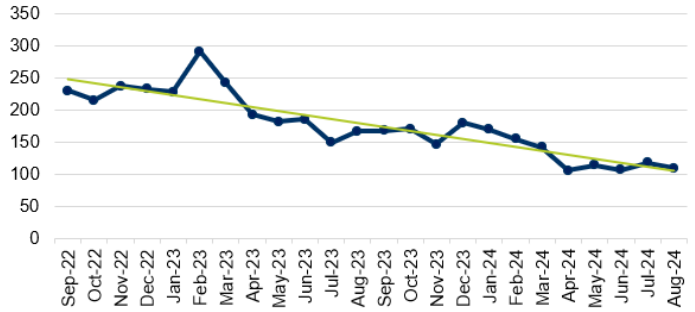
# THROUGHPUT SURVEY REPORT AUGUST 2024

The Nebraska Hospital Association, with input from its members, has created the following report highlighting the challenges with placing post-acute patients in our state. This report highlights the total number of patients awaiting post-acute placement – analyzed by differing data points. Addressing transition delays and optimizing the flow of patients continues to be a priority for the NHA and its members.

**LB227 Overview:**

- ✓ Provides a per diem Medicaid reimbursement to a hospital for a Medicaid patient who is eligible for discharge, but is unable to be transferred
- ✓ Directs DHHS to rebase inpatient interim per diem rates for CAHs
- ✓ Allows LTACHs to be eligible for Medicaid funding
- ✓ Creates a pilot program that provides financial incentives to post-acute facilities to accept patients with complex health needs

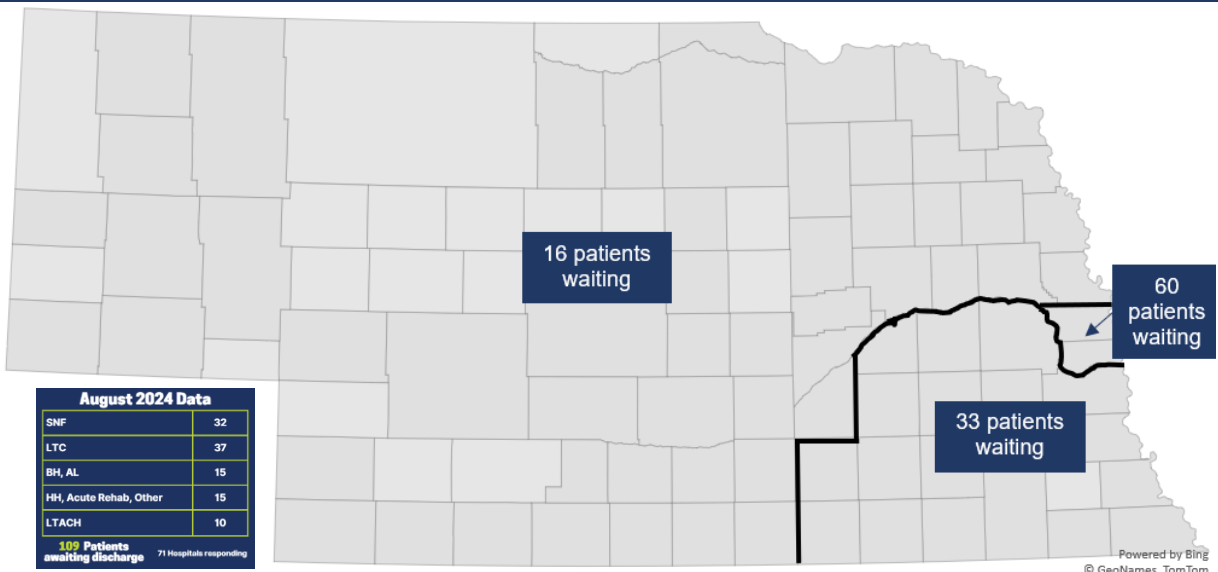
Patients Awaiting Discharge > 7 Days in Nebraska Hospital



**LB227 Pilot Project Updates**

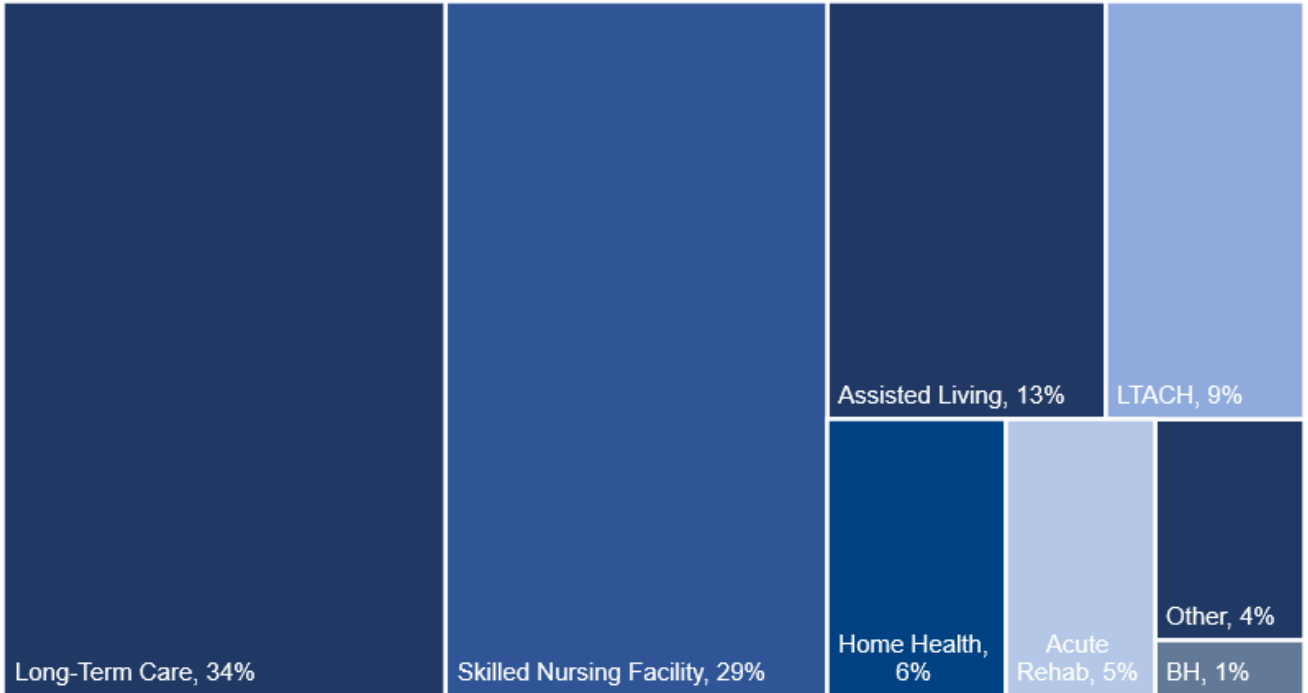
CHI Plainview Plainview	Cozad Community Health System Cozad	Douglas County Health Center Omaha	Emerald Nursing & Rehab Columbus	Florence Home Omaha	Ambassador Health Lincoln	Douglas County Health Center Omaha
Now accepting bariatric referrals	Now accepting bariatric referrals	Now accepting bariatric referrals	Now accepting bariatric referrals	Now accepting complex and end-of-life referrals	Anticipated dialysis project completion: Feb 2025	Anticipated dialysis project completion: Oct 2024

**NHA Throughput Survey Report: Patients Awaiting Discharge to Post-Acute Setting by NHA District Based on Responses to NHA's August 2024 Throughput Survey**

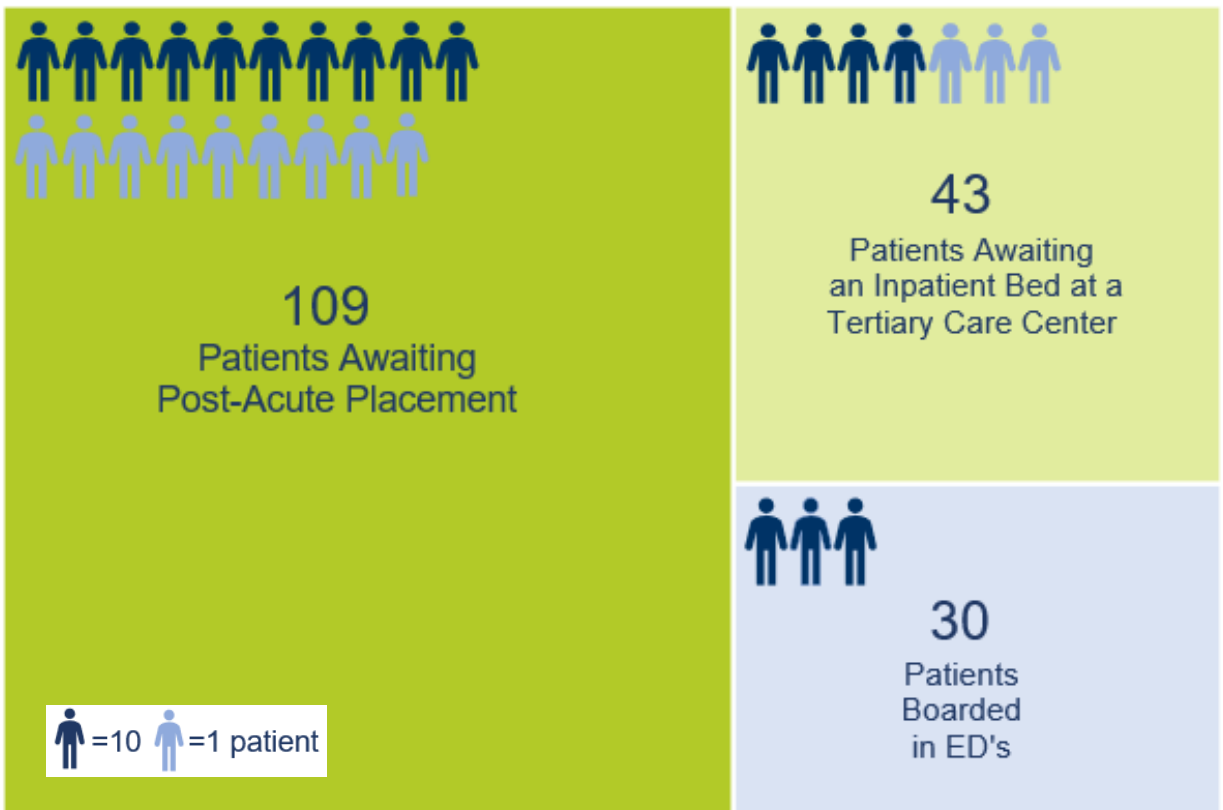


# THROUGHPUT SURVEY REPORT AUGUST 2024

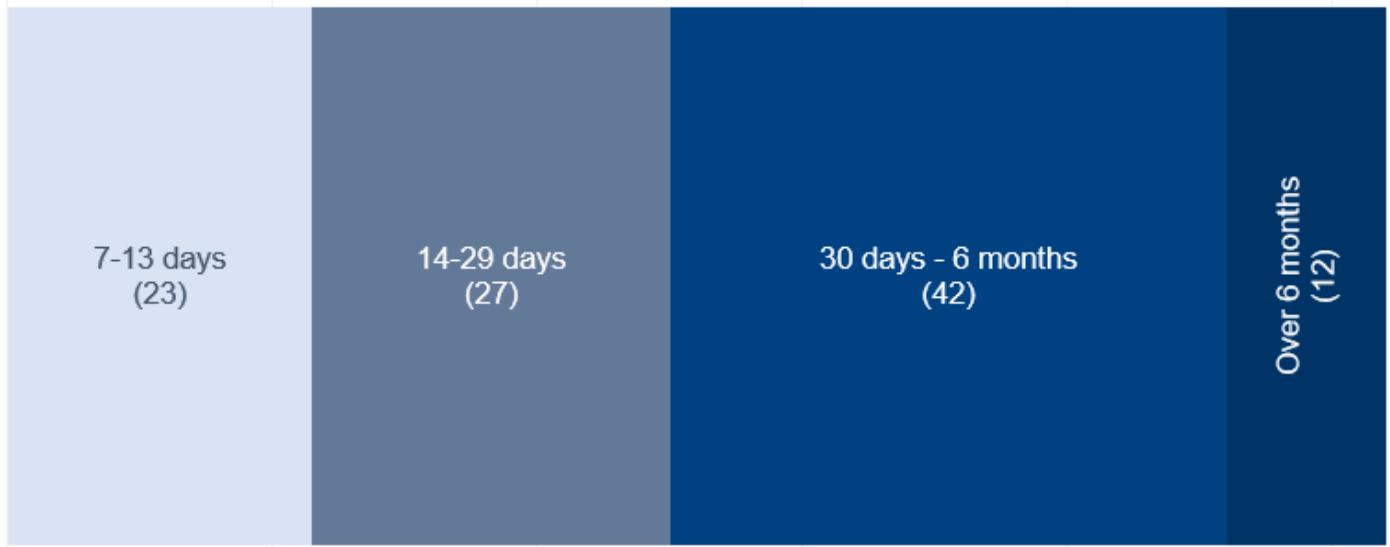
## % of Patients Awaiting Discharge to Post-Acute Setting > 7 Days by Facility Type



## Patients Awaiting Bed Placement to Post-Acute Setting, Tertiary Care Center, and Patients Boarded in the Emergency Department for the Month of August

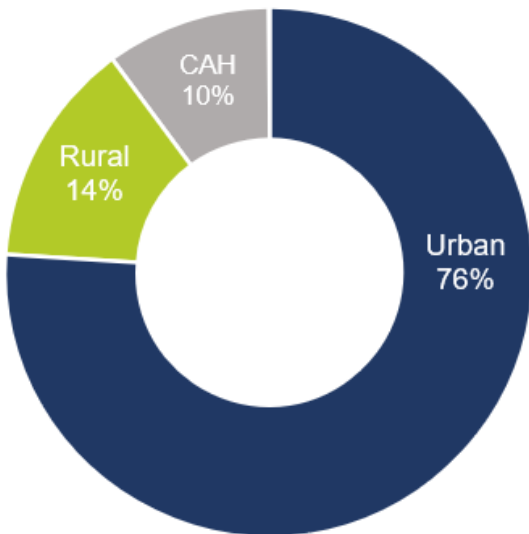


Patients Awaiting Discharge to Post-Acute Setting > 7 Days by Length of Time Awaiting Discharge (n=104)



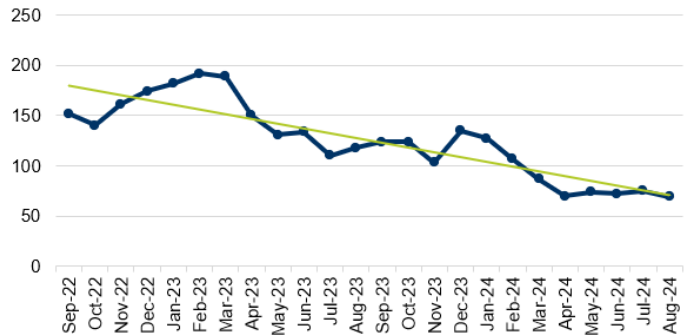
Notable Trends and Comments from August Throughput Survey

Patients Awaiting Post-Acute Placement by Peer Type



**63%** of patients needing post-acute placement need LTC or SNF needs

# of Patients Awaiting Placement Needing LTC or SNF Trend

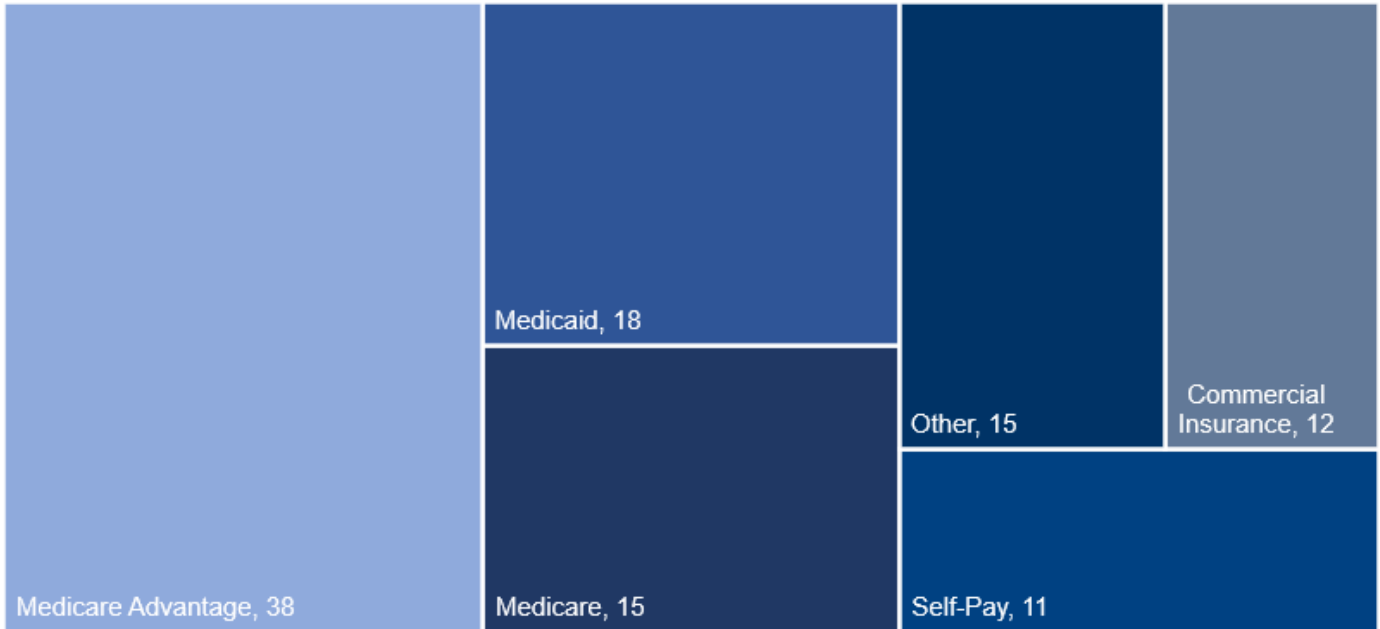


**1** Nebraska Nursing Home slated to close in the coming months

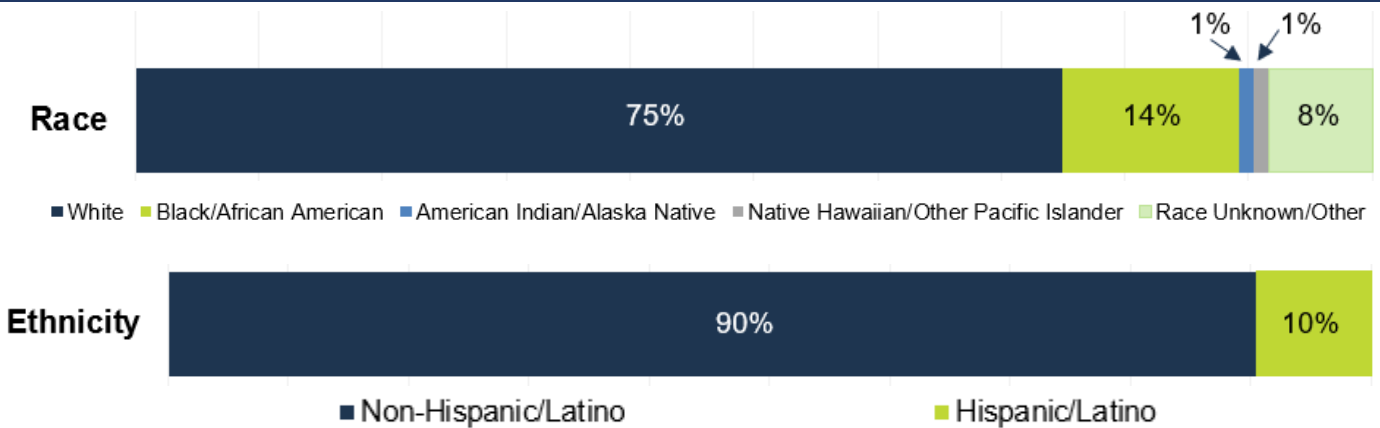
**Priority Needs in Nebraska:**

Behavioral Health - Dialysis - Bariatric - Dementia Care

## Patients Awaiting Discharge to Post-Acute Setting > 7 Days by Payer Type (n=109)



## Patients Awaiting Discharge to Post-Acute Setting > 7 Days by Race/Ethnicity (n=84)

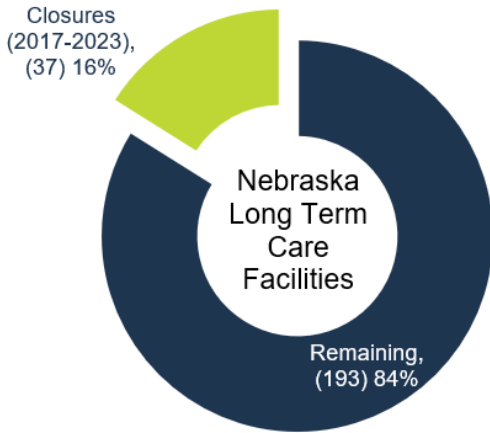
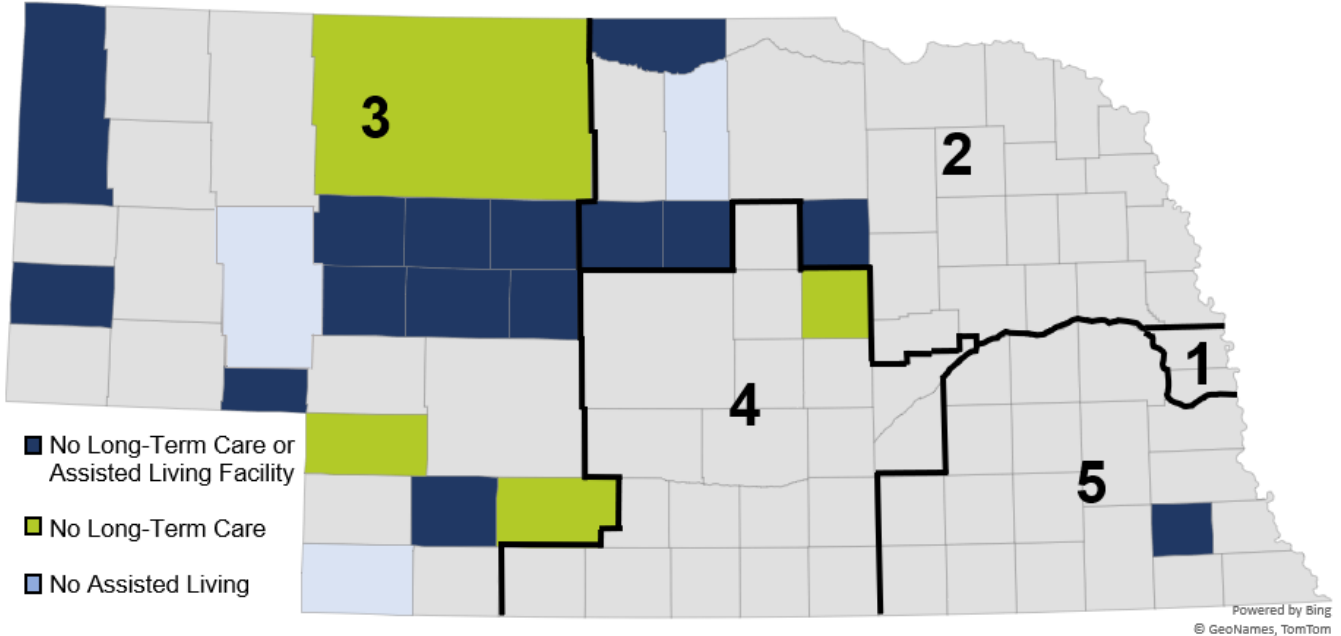


## Special Requirements for Patients Awaiting a Post-Acute Setting (n=28)

1:1 Supervision	9
Adult BH Needs	9
Discharging Out of State	4
Dementia Care Needs	6

Please note that survey respondents may not have answered every question. The charts and tables in this report are based on the number of responses to each specific question.

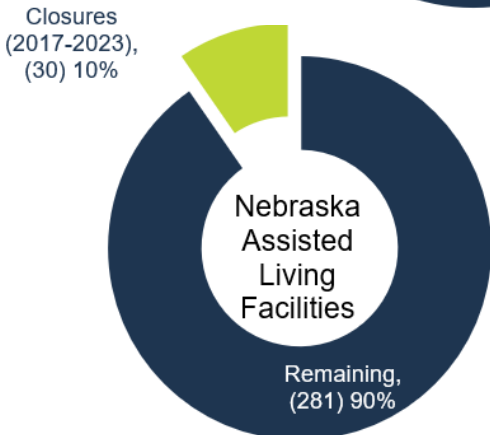
Nebraska's Current Long-Term Care and Assisted Living Facility Status



Over the past five years, more than 500 long term care facilities have closed nationwide. As nursing homes and other post-acute settings provide critical services and support for our Nebraska patients, it is crucial that we work towards providing a smooth transition across the care continuum.

**60%**

of Nebraska nursing home residents rely on Medicaid to pay for their care.



**2** Nebraska nursing homes closed in 2023

**3** Nebraska assisted living facilities closed in 2023