

# THROUGHPUT SURVEY REPORT JULY 2024

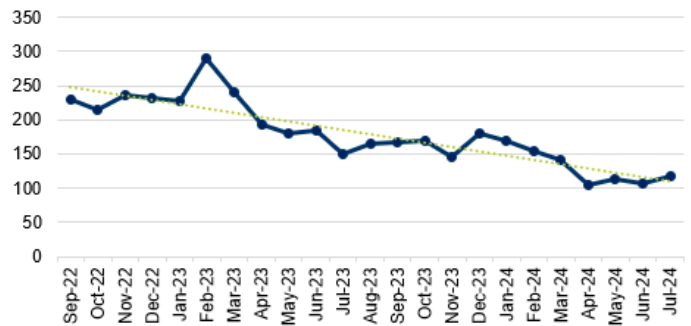
The Nebraska Hospital Association, with input from its members, has created the following report highlighting the challenges with placing post-acute patients in our state. This snapshot summarizes Nebraska hospital data related to the total number of patients awaiting post-acute care placement broken out by facility type, payer type, length of time awaiting discharge and race/ethnicity data.

Addressing transition delays and optimizing the flow of patients throughout our health care system is an ongoing priority for the NHA and our members. Our state has successfully implemented the following strategies to assist with this ongoing issue.

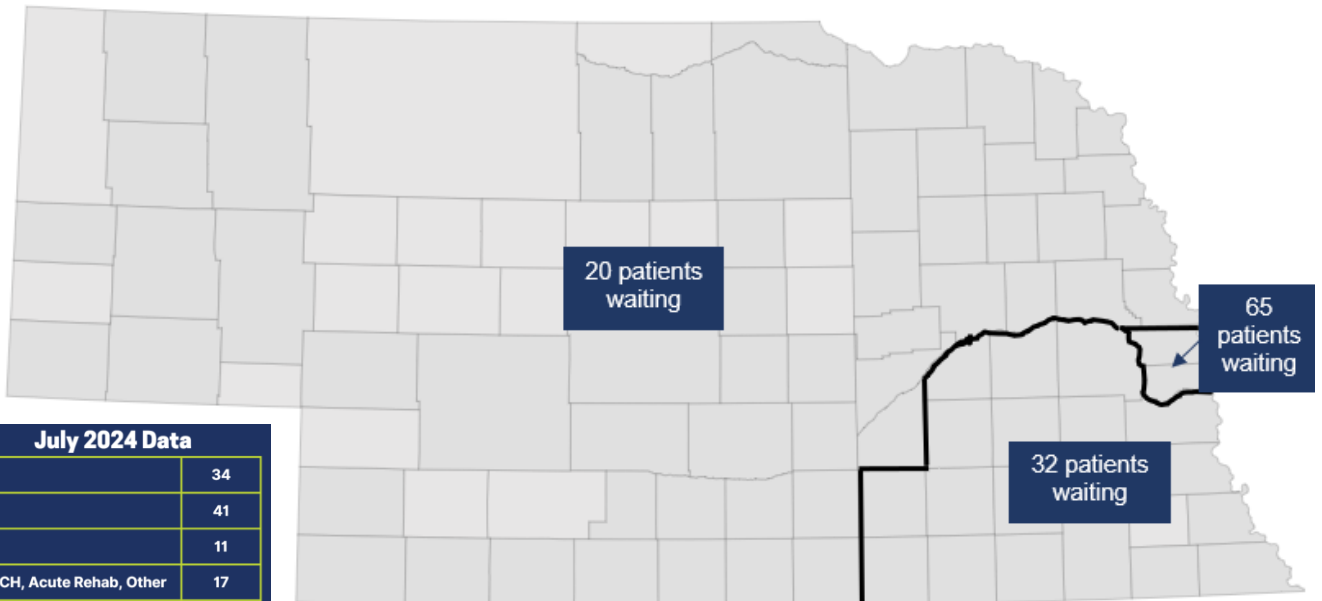
- Statewide Transitions of Care Council
- Medicaid Eligibility Task Force
- Monthly Regional Case Management Calls
- Omnibus Health and Human Services Package
- Swingbed and ED Transfer Analysis and Improvements

If you have any questions about the survey report, please contact Margaret Woeppl, Vice President of Workforce, Quality and Data at the NHA.

Patients Awaiting Discharge > 7 Days in Nebraska Hospital

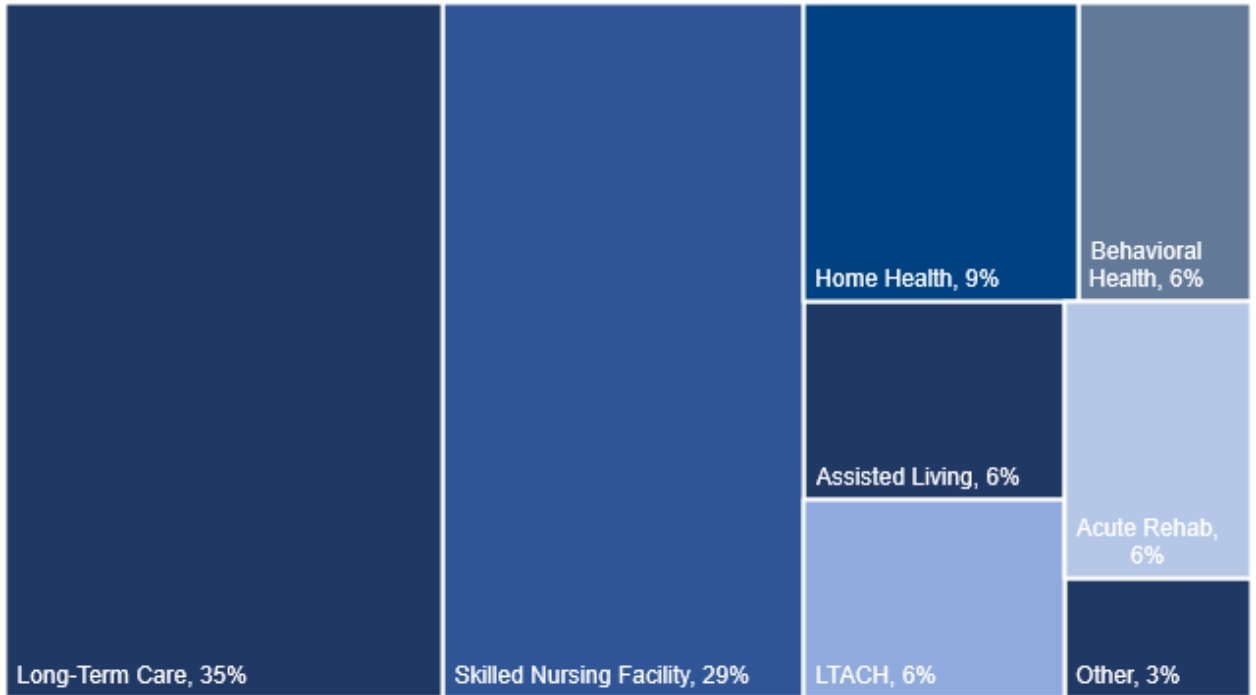


## NHA Throughput Survey Report: Patients Awaiting Discharge to Post-Acute Setting by NHA District Based on Responses to NHA's July 2024 Throughput Survey

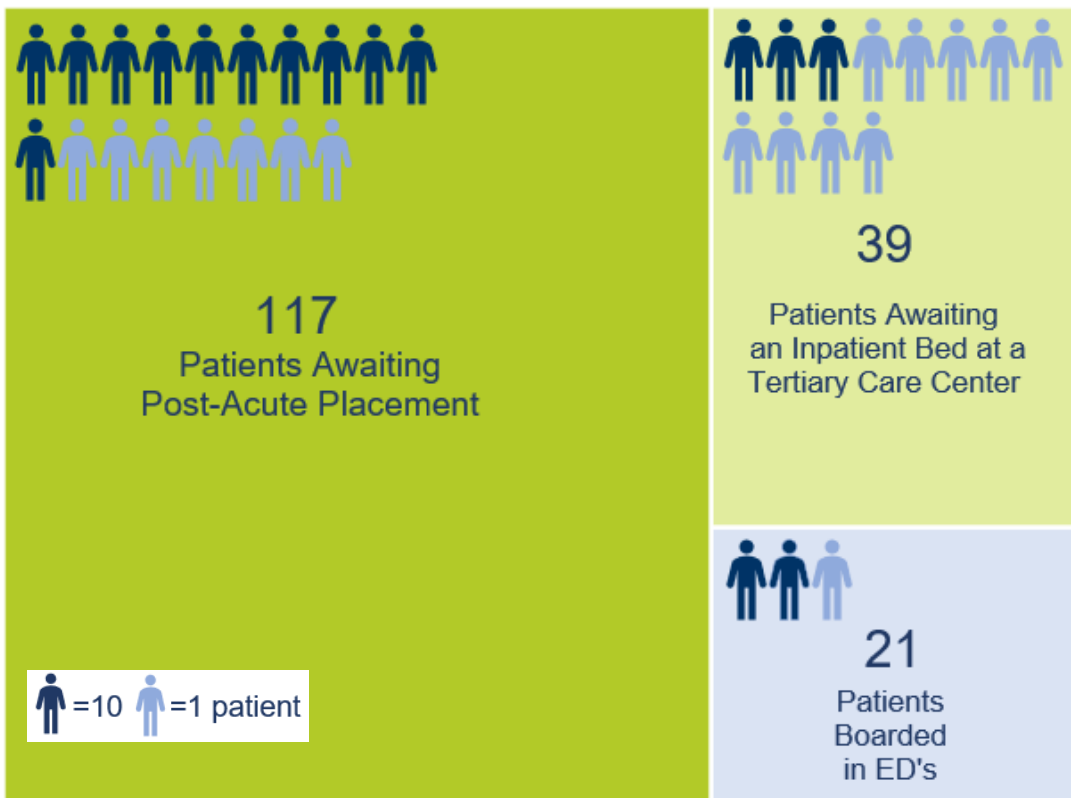


July 2024 Data	
SNF	34
LTC	41
HH	11
LTACH, Acute Rehab, Other	17
BH, AL	14
<b>117 Patients awaiting discharge</b>	
77 Hospitals responding	

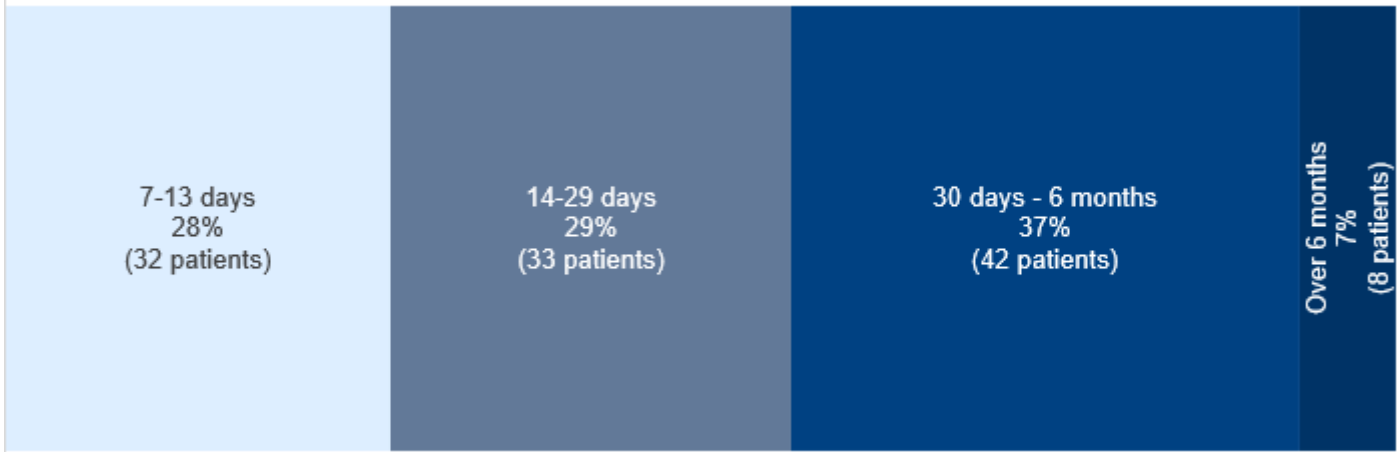
**% of Patients Awaiting Discharge to Post-Acute Setting > 7 Days by Facility Type**



**Patients Awaiting Bed Placement to Post-Acute Setting, Tertiary Care Center, and Patients Boarded in the Emergency Department for the Month of July**

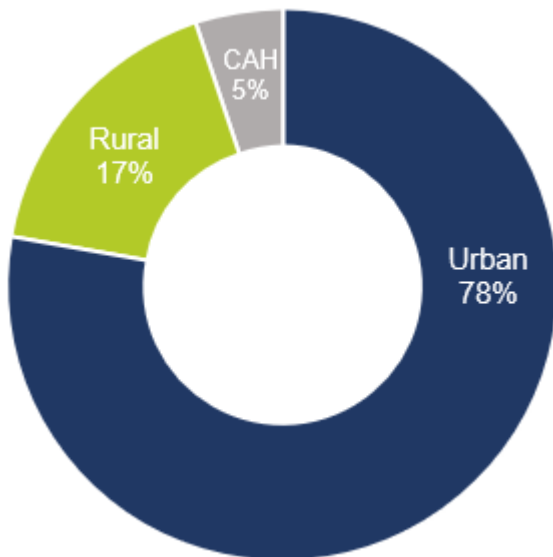


**Patients Awaiting Discharge to Post-Acute Setting > 7 Days by Length of Time Awaiting Discharge (n=115)**



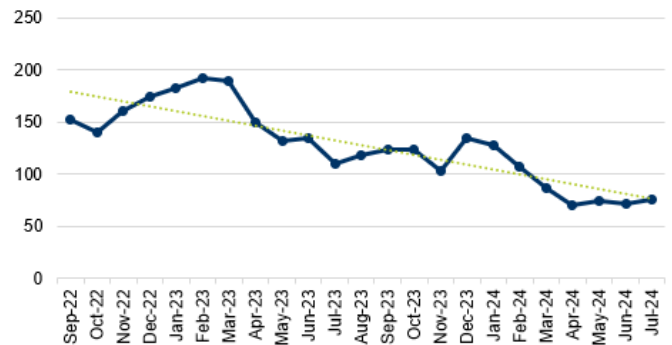
**Notable Trends and Comments from July Throughput Survey**

**Patients Awaiting Post-Acute Placement by Peer Type**



**64%** of patients needing post-acute placement need LTC or SNF needs

**# of Patients Awaiting Placement Needing LTC or SNF Trend**

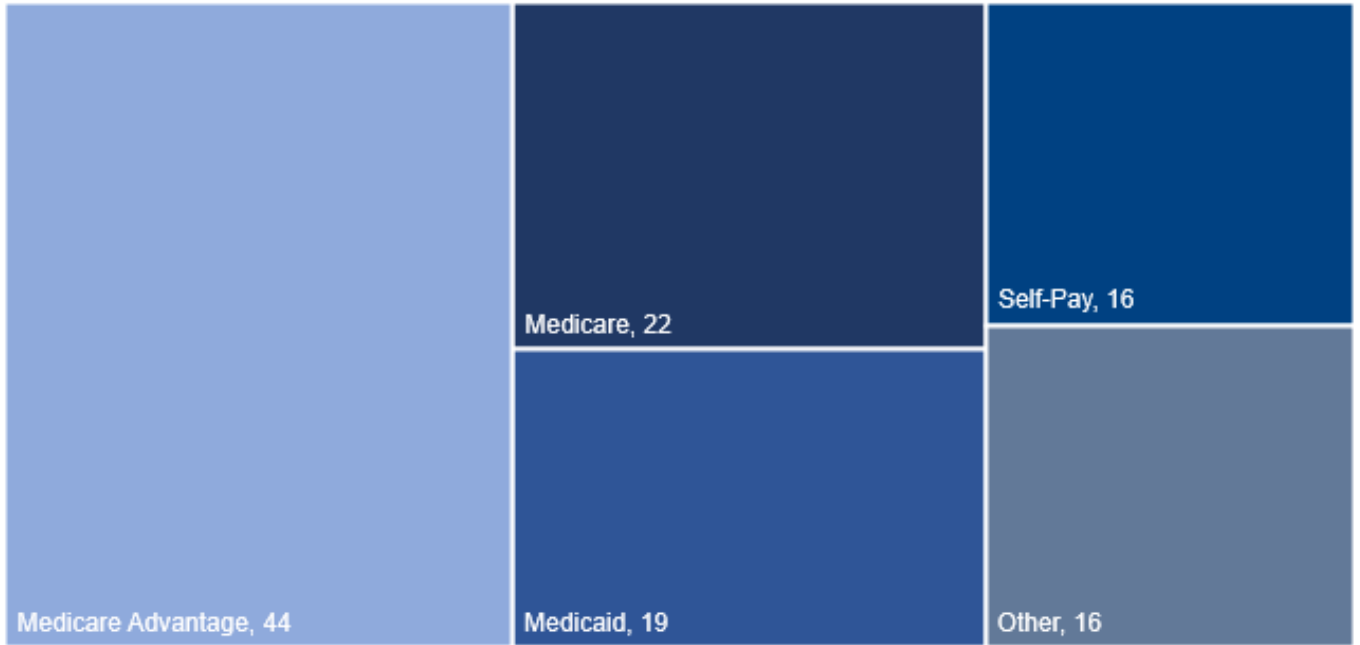


**1** Nebraska Nursing Home slated to close in the coming months

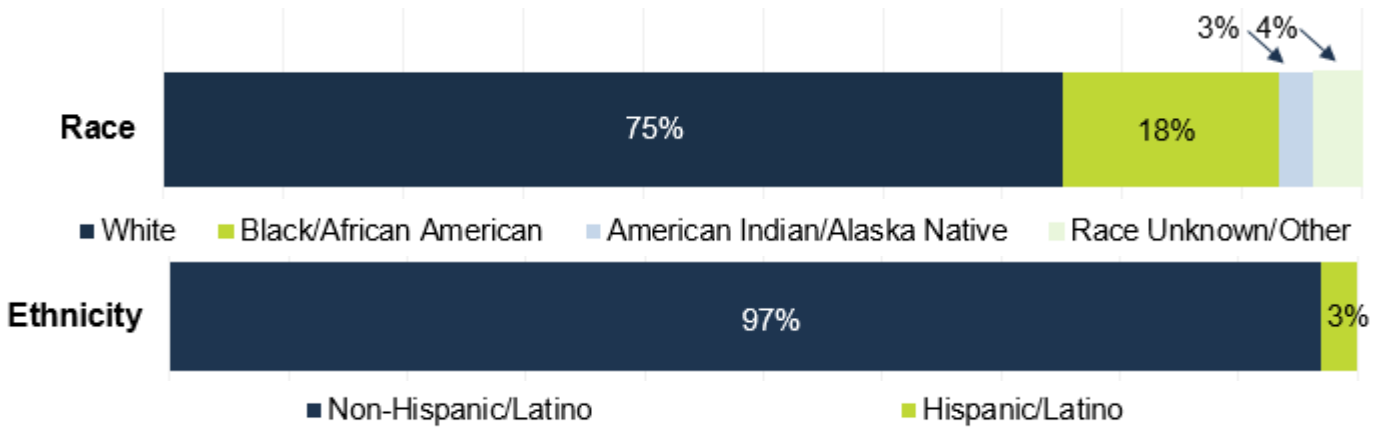
**Priority Needs in Nebraska:**

Behavioral Health - Dialysis - Bariatric - Dementia Care

## Patients Awaiting Discharge to Post-Acute Setting > 7 Days by Payer Type (n=117)



## Patients Awaiting Discharge to Post-Acute Setting > 7 Days by Race/Ethnicity (n=100)

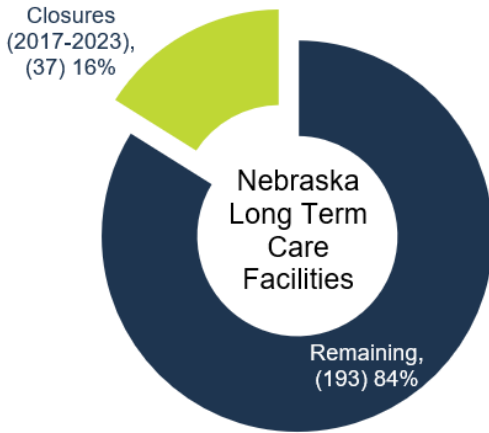
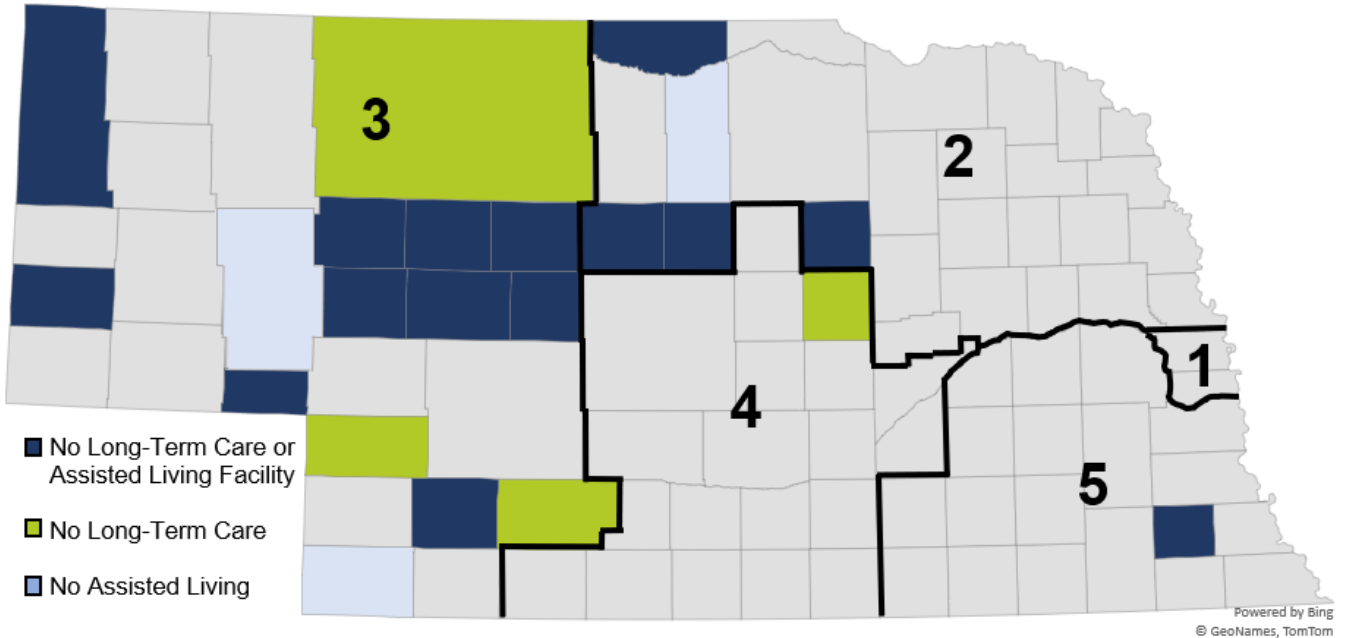


## Special Requirements for Patients Awaiting a Post-Acute Setting (n=33)

1:1 Supervision	7
Adult BH Needs	13
Discharging Out of State	6
Dementia Care Needs	7

Please note that survey respondents may not have answered every question. The charts and tables in this report are based on the number of responses to each specific question.

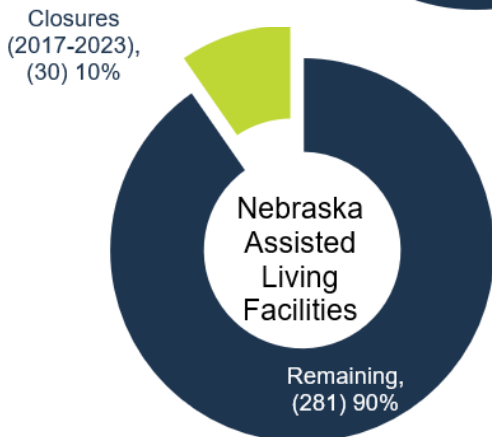
Nebraska's Current Long-Term Care and Assisted Living Facility Status



Over the past five years, more than 500 long term care facilities have closed nationwide. As nursing homes and other post-acute settings provide critical services and support for our Nebraska patients, it is crucial that we work towards providing a smooth transition across the care continuum.

**60%**

of Nebraska nursing home residents rely on Medicaid to pay for their care.



**2** Nebraska nursing homes closed in 2023

**3** Nebraska assisted living facilities closed in 2023