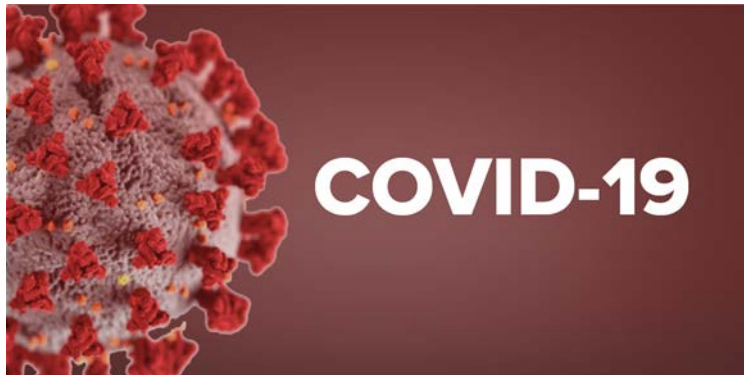


COVID-19 DHHS Leadership Epidemiology Briefing



DATE 27JANUARY2021

Data current as of 0630

NEBRASKA

Good Life. Great Mission.

DEPT. OF HEALTH AND HUMAN SERVICES

Helping People Live Better Lives.

Daily Report

NEBRASKA

Good Life. Great Mission.

DEPT. OF HEALTH AND HUMAN SERVICES

Helping People Live Better Lives.

COVID-19 Cases

New Cases

on 1/26/21

323

▼ -93.5% from previous day

7 Day Trends

New cases/day (7-day avg)

694.4

35.90 per 100K

▼ -3.3% from previous 7 days

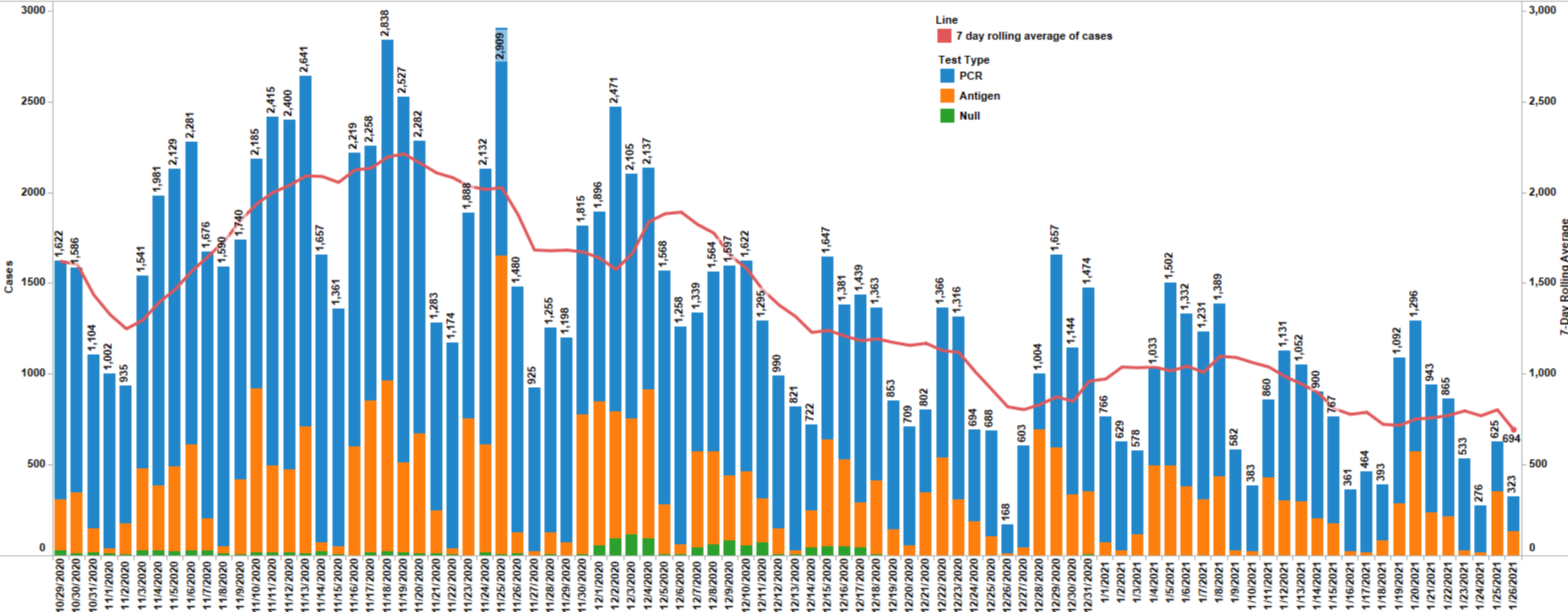
Total Positive Cases

As of 1/26/21

188,074

*Nebraska residents only

Daily new cases by lab report date, by test type, and last 90 days, Nebraska



Lab Report Date
Data Source: Nebraska Electronic Disease Surveillance System (NEDSS)

COVID-19 Tests

New Tests Reported

on 1/26/21

10,631

▼ -49.9% from previous day

7 Day Trends

New tests/day (7-day avg)

13,612

▲ 49.7% from previous 7 days

Total Tests Performed

as of 1/26/21

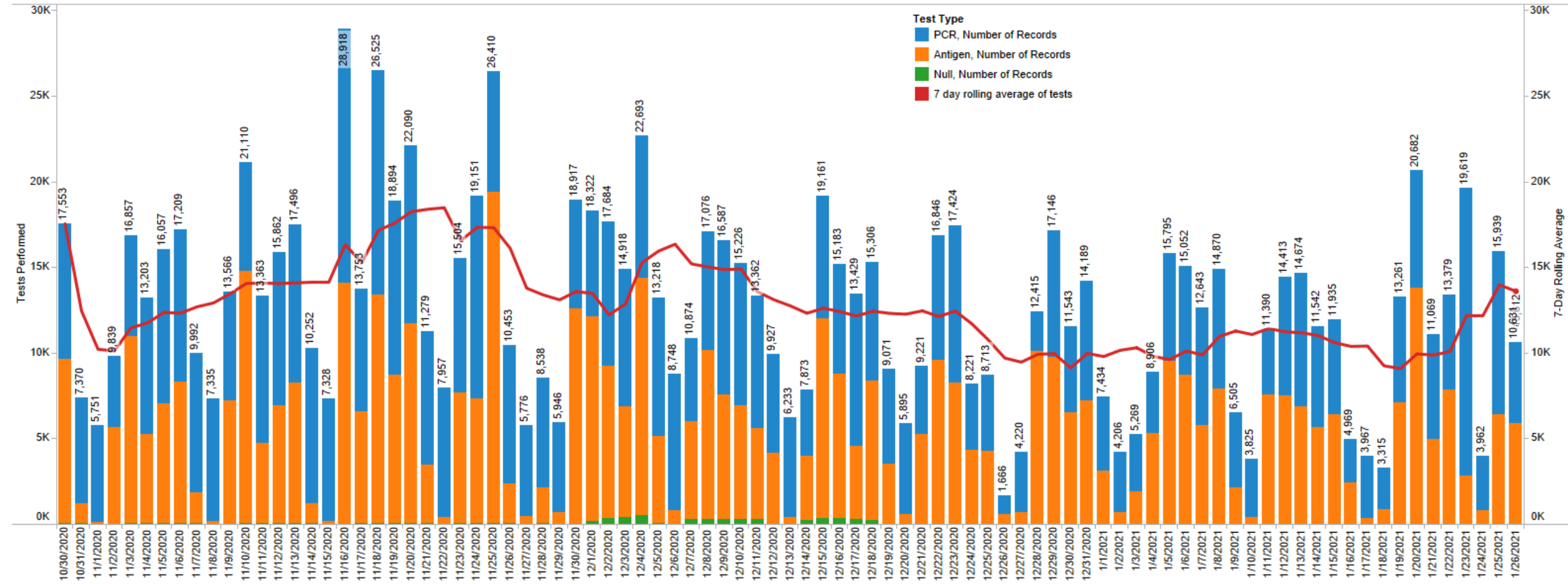
2,054,090

Nebraska residents tested: 914,961

47.2% of residents tested

Daily number of tests performed, by lab report date and test type, last 90 days, Nebraska

Day of Lab Report Date



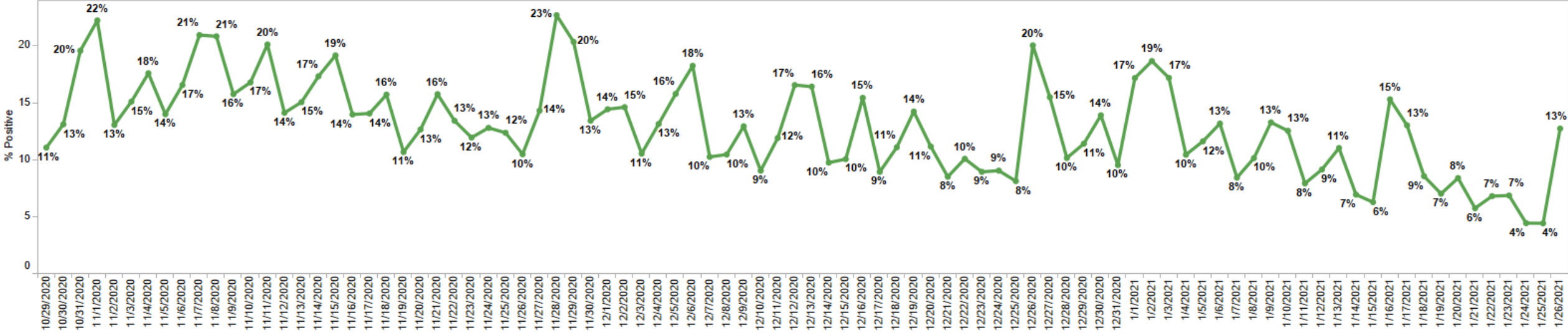
Lab Report Date

Data Source: Nebraska Electronic Disease Surveillance System (NEDSS)

Daily Test Positivity

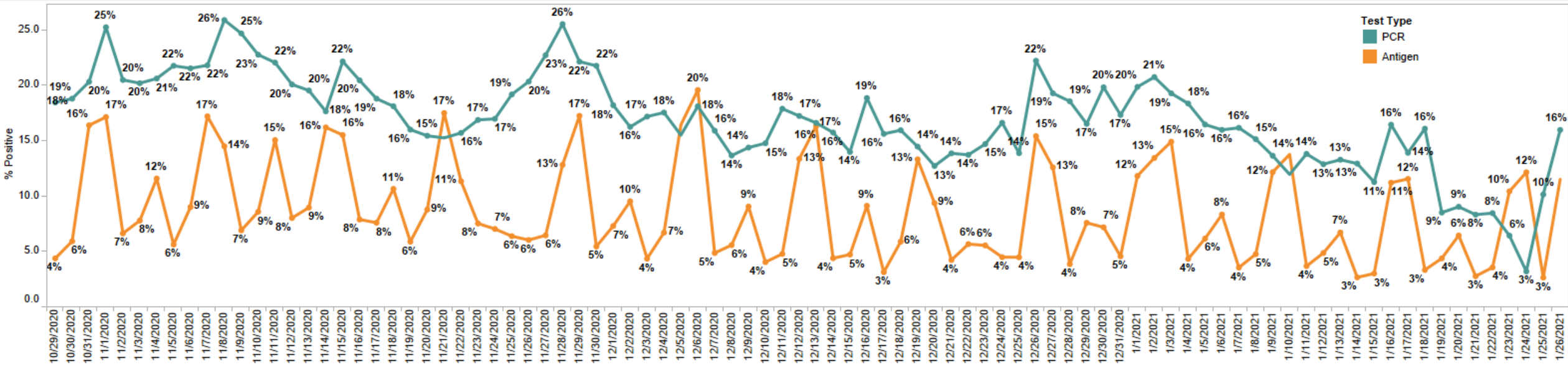
Daily percent positivity by specimen collection date, last 90 days, Nebraska (All Tests)

Day of Specimen Collection Dt



Daily percent positivity by specimen collection date and test type, last 90 days, Nebraska (PCR vs. Antigen)

Test Type
■ PCR
■ Antigen



Specimen Collection Date

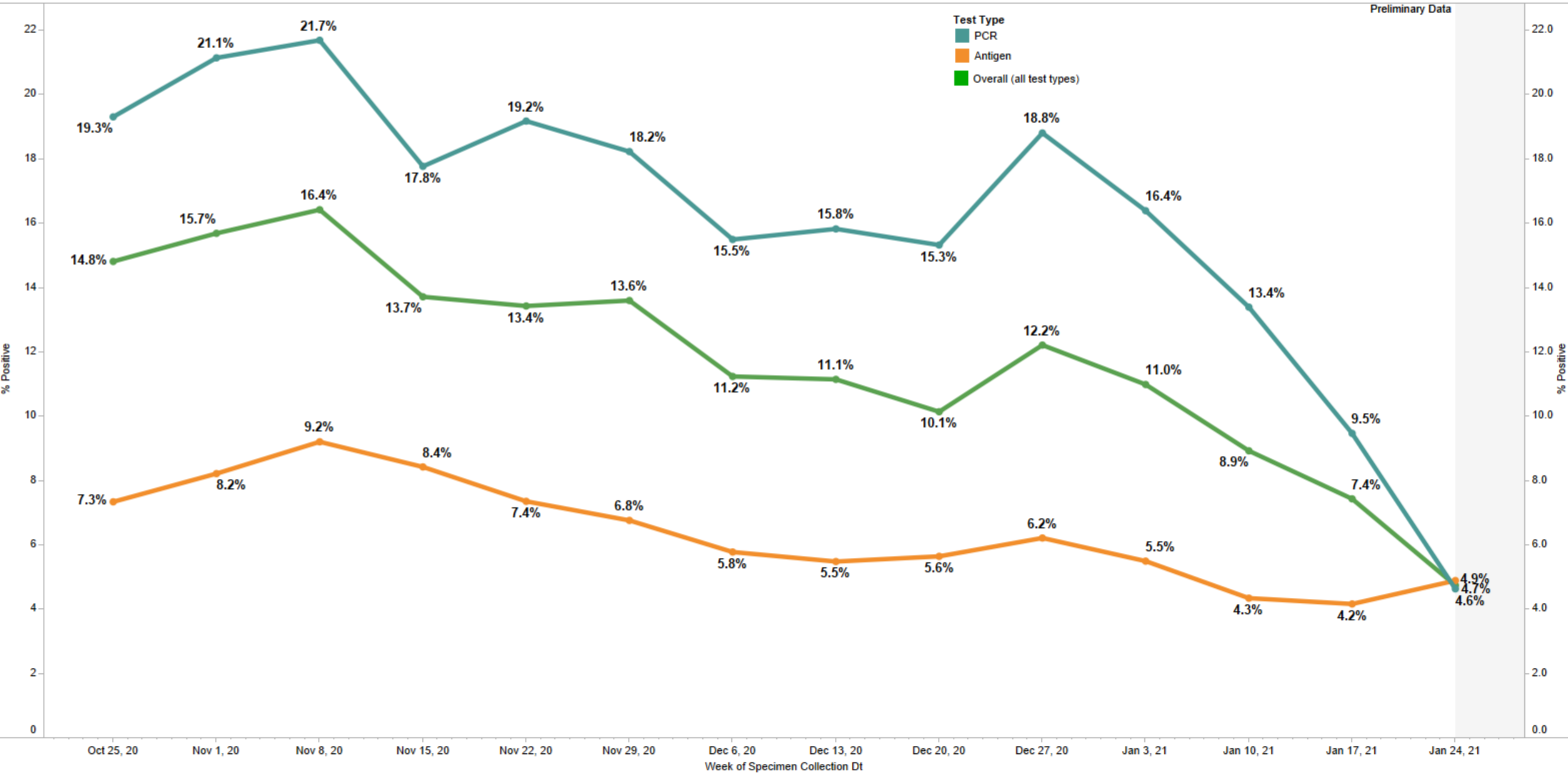
Data Source: Nebraska Electronic Disease Surveillance System (NEDSS)

Weekly Percent Positivity

Weekly percentage of positive tests by specimen collection date and test type, last 90 days, Nebraska

Preliminary Data

Test Type
PCR
Antigen
Overall (all test types)



Data Source: Nebraska Electronic Disease Surveillance System (NEDSS)

Daily LHD Metrics

Daily local health department metrics by lab report date, last 7 days

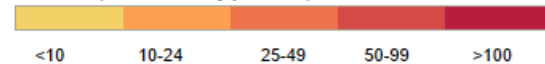
New cases (% Pos), New cases/day/100K (7 day avg)

LHD short	Day of Lab Report Date						
	1/20/2021	1/21/2021	1/22/2021	1/23/2021	1/24/2021	1/25/2021	1/26/2021
Central	Cases: 47 (6.4% pos) Cases/day/100K: 60 (7d avg: 39)	Cases: 35 (9.4% pos) Cases/day/100K: 45 (7d avg: 37)	Cases: 45 (13.7% pos) Cases/day/100K: 57 (7d avg: 35)	Cases: 17 (7.1% pos) Cases/day/100K: 22 (7d avg: 36)	Cases: 17 (22.0% pos) Cases/day/100K: 22 (7d avg: 36)	Cases: 35 (5.4% pos) Cases/day/100K: 45 (7d avg: 41)	Cases: 11 (6.0% pos) Cases/day/100K: 14 (7d avg: 38)
Dakota	Cases: 11 (3.8% pos) Cases/day/100K: 55 (7d avg: 27)	Cases: 7 (6.8% pos) Cases/day/100K: 35 (7d avg: 24)	Cases: 2 (2.0% pos) Cases/day/100K: 10 (7d avg: 21)	Cases: 7 (7.4% pos) Cases/day/100K: 35 (7d avg: 24)	Cases: 3 (8.0% pos) Cases/day/100K: 15 (7d avg: 25)	Cases: 5 (12.8% pos) Cases/day/100K: 25 (7d avg: 28)	Cases: 1 (1.0% pos) Cases/day/100K: 5 (7d avg: 26)
Douglas	Cases: 448 (9.0% pos) Cases/day/100K: 78 (7d avg: 43)	Cases: 294 (9.9% pos) Cases/day/100K: 51 (7d avg: 43)	Cases: 293 (8.3% pos) Cases/day/100K: 51 (7d avg: 45)	Cases: 166 (8.9% pos) Cases/day/100K: 29 (7d avg: 47)	Cases: 91 (7.7% pos) Cases/day/100K: 16 (7d avg: 45)	Cases: 191 (6.8% pos) Cases/day/100K: 33 (7d avg: 46)	Cases: 75 (4.3% pos) Cases/day/100K: 13 (7d avg: 39)
East Central	Cases: 16 (3.4% pos) Cases/day/100K: 30 (7d avg: 25)	Cases: 19 (11.5% pos) Cases/day/100K: 36 (7d avg: 25)	Cases: 9 (2.1% pos) Cases/day/100K: 17 (7d avg: 25)	Cases: 10 (6.7% pos) Cases/day/100K: 19 (7d avg: 26)	Cases: 2 (3.2% pos) Cases/day/100K: 4 (7d avg: 23)	Cases: 2 (2.0% pos) Cases/day/100K: 4 (7d avg: 23)	Cases: 2 (2.6% pos) Cases/day/100K: 4 (7d avg: 16)
Elkhorn Logan Valley	Cases: 28 (5.8% pos) Cases/day/100K: 50 (7d avg: 28)	Cases: 19 (7.5% pos) Cases/day/100K: 34 (7d avg: 29)	Cases: 11 (2.6% pos) Cases/day/100K: 20 (7d avg: 27)	Cases: 5 (2.7% pos) Cases/day/100K: 9 (7d avg: 27)	Cases: 2 (2.2% pos) Cases/day/100K: 4 (7d avg: 26)	Cases: 11 (4.5% pos) Cases/day/100K: 20 (7d avg: 27)	Cases: 13 (2.9% pos) Cases/day/100K: 23 (7d avg: 23)
Four Corners	Cases: 17 (2.5% pos) Cases/day/100K: 38 (7d avg: 25)	Cases: 27 (9.5% pos) Cases/day/100K: 61 (7d avg: 27)	Cases: 10 (5.1% pos) Cases/day/100K: 23 (7d avg: 26)	Cases: 8 (2.7% pos) Cases/day/100K: 18 (7d avg: 26)	Cases: 5 (2.2% pos) Cases/day/100K: 11 (7d avg: 26)	Cases: 4 (1.9% pos) Cases/day/100K: 9 (7d avg: 27)	Cases: 2 (1.2% pos) Cases/day/100K: 5 (7d avg: 24)
Lincoln/Lancaster	Cases: 159 (8.1% pos) Cases/day/100K: 50 (7d avg: 43)	Cases: 150 (9.0% pos) Cases/day/100K: 47 (7d avg: 44)	Cases: 160 (8.2% pos) Cases/day/100K: 50 (7d avg: 44)	Cases: 139 (1.6% pos) Cases/day/100K: 44 (7d avg: 46)	Cases: 56 (10.2% pos) Cases/day/100K: 18 (7d avg: 45)	Cases: 87 (1.5% pos) Cases/day/100K: 27 (7d avg: 43)	Cases: 50 (1.5% pos) Cases/day/100K: 16 (7d avg: 36)
Loup Basin	Cases: 23 (4.4% pos) Cases/day/100K: 75 (7d avg: 28)	Cases: 12 (16.2% pos) Cases/day/100K: 39 (7d avg: 29)	Cases: 6 (6.4% pos) Cases/day/100K: 20 (7d avg: 29)	Cases: 5 (4.4% pos) Cases/day/100K: 16 (7d avg: 29)	Cases: 0 (0.0% pos) Cases/day/100K: 0 (7d avg: 27)	Cases: 13 (14.7% pos) Cases/day/100K: 42 (7d avg: 32)	Cases: 3 (2.9% pos) Cases/day/100K: 10 (7d avg: 29)
North Central	Cases: 25 (6.4% pos) Cases/day/100K: 56 (7d avg: 23)	Cases: 8 (6.8% pos) Cases/day/100K: 18 (7d avg: 22)	Cases: 16 (6.0% pos) Cases/day/100K: 36 (7d avg: 26)	Cases: 2 (1.1% pos) Cases/day/100K: 4 (7d avg: 26)	Cases: 2 (2.0% pos) Cases/day/100K: 4 (7d avg: 25)	Cases: 19 (22.6% pos) Cases/day/100K: 43 (7d avg: 28)	Cases: 3 (1.1% pos) Cases/day/100K: 7 (7d avg: 24)
Northeast	Cases: 28 (8.2% pos) Cases/day/100K: 91 (7d avg: 31)	Cases: 13 (11.9% pos) Cases/day/100K: 42 (7d avg: 34)	Cases: 14 (15.3% pos) Cases/day/100K: 46 (7d avg: 37)	Cases: 6 (2.6% pos) Cases/day/100K: 20 (7d avg: 39)	Cases: 3 (6.2% pos) Cases/day/100K: 10 (7d avg: 40)	Cases: 19 (8.2% pos) Cases/day/100K: 62 (7d avg: 48)	Cases: 8 (4.7% pos) Cases/day/100K: 26 (7d avg: 42)
Panhandle	Cases: 31 (2.5% pos) Cases/day/100K: 37 (7d avg: 22)	Cases: 45 (14.2% pos) Cases/day/100K: 54 (7d avg: 27)	Cases: 17 (9.7% pos) Cases/day/100K: 20 (7d avg: 27)	Cases: 18 (6.3% pos) Cases/day/100K: 22 (7d avg: 26)	Cases: 3 (9.4% pos) Cases/day/100K: 4 (7d avg: 26)	Cases: 35 (11.7% pos) Cases/day/100K: 42 (7d avg: 32)	Cases: 31 (8.6% pos) Cases/day/100K: 37 (7d avg: 31)
Public Health Solutions	Cases: 32 (4.0% pos) Cases/day/100K: 60 (7d avg: 41)	Cases: 17 (12.3% pos) Cases/day/100K: 32 (7d avg: 38)	Cases: 13 (5.7% pos) Cases/day/100K: 24 (7d avg: 36)	Cases: 10 (7.5% pos) Cases/day/100K: 19 (7d avg: 35)	Cases: 4 (2.6% pos) Cases/day/100K: 8 (7d avg: 35)	Cases: 2 (1.1% pos) Cases/day/100K: 4 (7d avg: 30)	Cases: 2 (0.4% pos) Cases/day/100K: 4 (7d avg: 21)
Sarpy/Cass	Cases: 191 (12.1% pos) Cases/day/100K: 89 (7d avg: 45)	Cases: 97 (8.8% pos) Cases/day/100K: 45 (7d avg: 44)	Cases: 89 (8.0% pos) Cases/day/100K: 42 (7d avg: 45)	Cases: 58 (8.9% pos) Cases/day/100K: 27 (7d avg: 46)	Cases: 36 (13.8% pos) Cases/day/100K: 17 (7d avg: 44)	Cases: 82 (7.8% pos) Cases/day/100K: 38 (7d avg: 47)	Cases: 26 (4.5% pos) Cases/day/100K: 12 (7d avg: 39)
South Heartland	Cases: 22 (7.6% pos) Cases/day/100K: 49 (7d avg: 34)	Cases: 14 (5.6% pos) Cases/day/100K: 31 (7d avg: 31)	Cases: 19 (8.4% pos) Cases/day/100K: 31 (7d avg: 30)	Cases: 20 (12.0% pos) Cases/day/100K: 42 (7d avg: 34)	Cases: 4 (15.2% pos) Cases/day/100K: 9 (7d avg: 32)	Cases: 11 (15.1% pos) Cases/day/100K: 24 (7d avg: 35)	Cases: 8 (4.7% pos) Cases/day/100K: 18 (7d avg: 31)
Southeast	Cases: 35 (10.7% pos) Cases/day/100K: 91 (7d avg: 35)	Cases: 17 (9.5% pos) Cases/day/100K: 44 (7d avg: 37)	Cases: 21 (9.4% pos) Cases/day/100K: 54 (7d avg: 42)	Cases: 3 (2.0% pos) Cases/day/100K: 8 (7d avg: 41)	Cases: 6 (10.9% pos) Cases/day/100K: 16 (7d avg: 43)	Cases: 8 (4.1% pos) Cases/day/100K: 21 (7d avg: 43)	Cases: 2 (2.3% pos) Cases/day/100K: 5 (7d avg: 34)
Southwest	Cases: 31 (9.9% pos) Cases/day/100K: 81 (7d avg: 44)	Cases: 28 (22.5% pos) Cases/day/100K: 73 (7d avg: 49)	Cases: 13 (6.7% pos) Cases/day/100K: 34 (7d avg: 44)	Cases: 14 (2.9% pos) Cases/day/100K: 37 (7d avg: 44)	Cases: 4 (10.3% pos) Cases/day/100K: 10 (7d avg: 44)	Cases: 30 (24.2% pos) Cases/day/100K: 78 (7d avg: 55)	Cases: 18 (7.8% pos) Cases/day/100K: 47 (7d avg: 52)
Three Rivers	Cases: 47 (7.7% pos) Cases/day/100K: 60 (7d avg: 48)	Cases: 58 (9.9% pos) Cases/day/100K: 74 (7d avg: 43)	Cases: 34 (8.3% pos) Cases/day/100K: 43 (7d avg: 41)	Cases: 24 (10.7% pos) Cases/day/100K: 30 (7d avg: 43)	Cases: 18 (20.0% pos) Cases/day/100K: 23 (7d avg: 43)	Cases: 30 (6.8% pos) Cases/day/100K: 38 (7d avg: 47)	Cases: 36 (9.2% pos) Cases/day/100K: 46 (7d avg: 45)
Two Rivers	Cases: 63 (4.6% pos) Cases/day/100K: 65 (7d avg: 26)	Cases: 51 (13.2% pos) Cases/day/100K: 53 (7d avg: 29)	Cases: 57 (9.8% pos) Cases/day/100K: 59 (7d avg: 32)	Cases: 5 (1.2% pos) Cases/day/100K: 5 (7d avg: 31)	Cases: 11 (20.3% pos) Cases/day/100K: 11 (7d avg: 32)	Cases: 19 (5.4% pos) Cases/day/100K: 20 (7d avg: 34)	Cases: 7 (2.5% pos) Cases/day/100K: 7 (7d avg: 31)
West Central	Cases: 16 (5.6% pos) Cases/day/100K: 42 (7d avg: 36)	Cases: 16 (12.1% pos) Cases/day/100K: 42 (7d avg: 31)	Cases: 16 (7.4% pos) Cases/day/100K: 42 (7d avg: 33)	Cases: 11 (4.7% pos) Cases/day/100K: 29 (7d avg: 34)	Cases: 6 (14.1% pos) Cases/day/100K: 16 (7d avg: 32)	Cases: 12 (7.6% pos) Cases/day/100K: 32 (7d avg: 36)	Cases: 19 (15.9% pos) Cases/day/100K: 50 (7d avg: 36)

Risk Level Color Codes based on Daily Case Rate (new cases/day/100K)

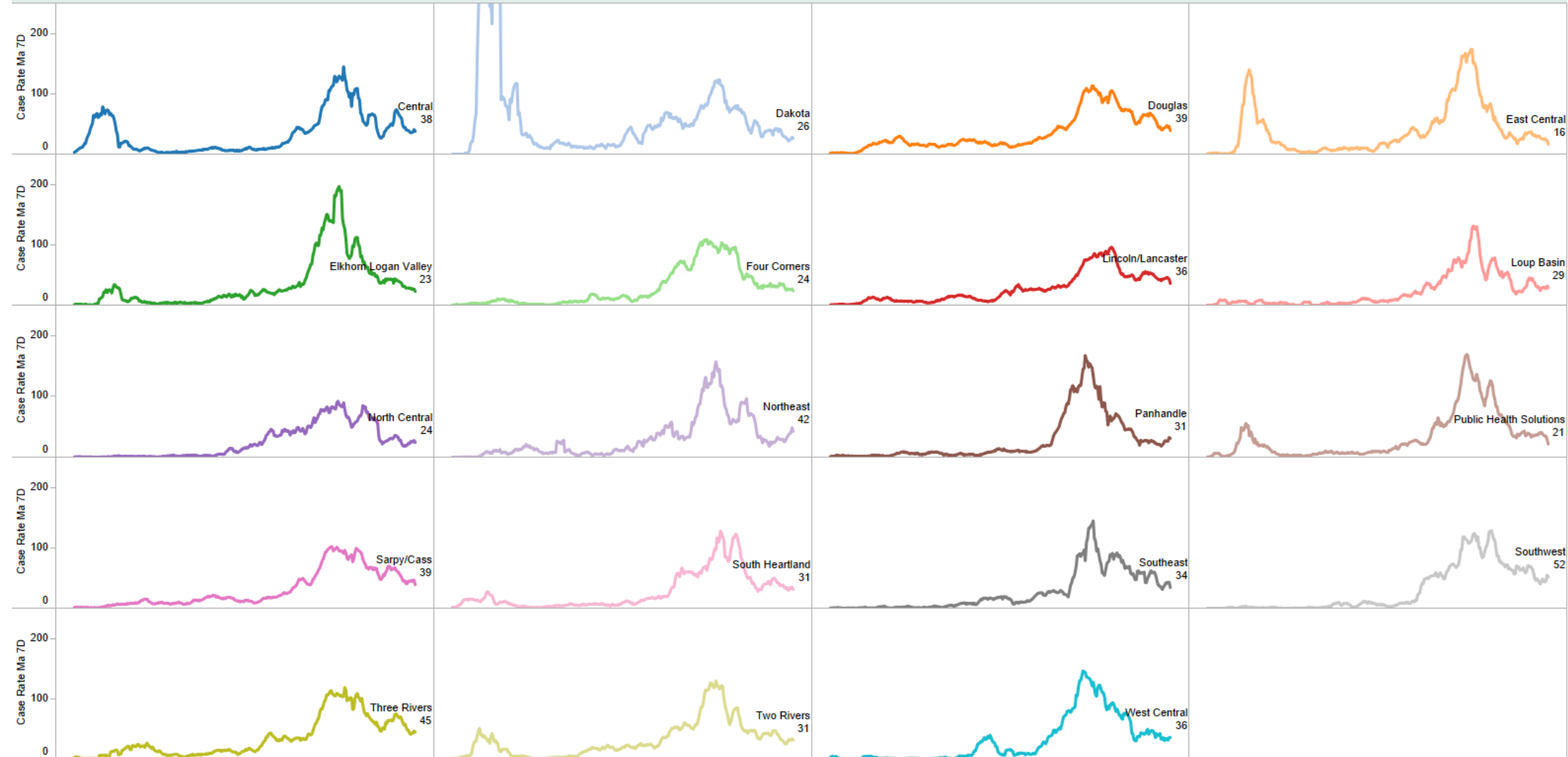
Data Source: Nebraska Electronic Disease Surveillance System (NEDSS)

Case Rate (new cases/day/per 100K)



Daily LHD Case Rate Trends

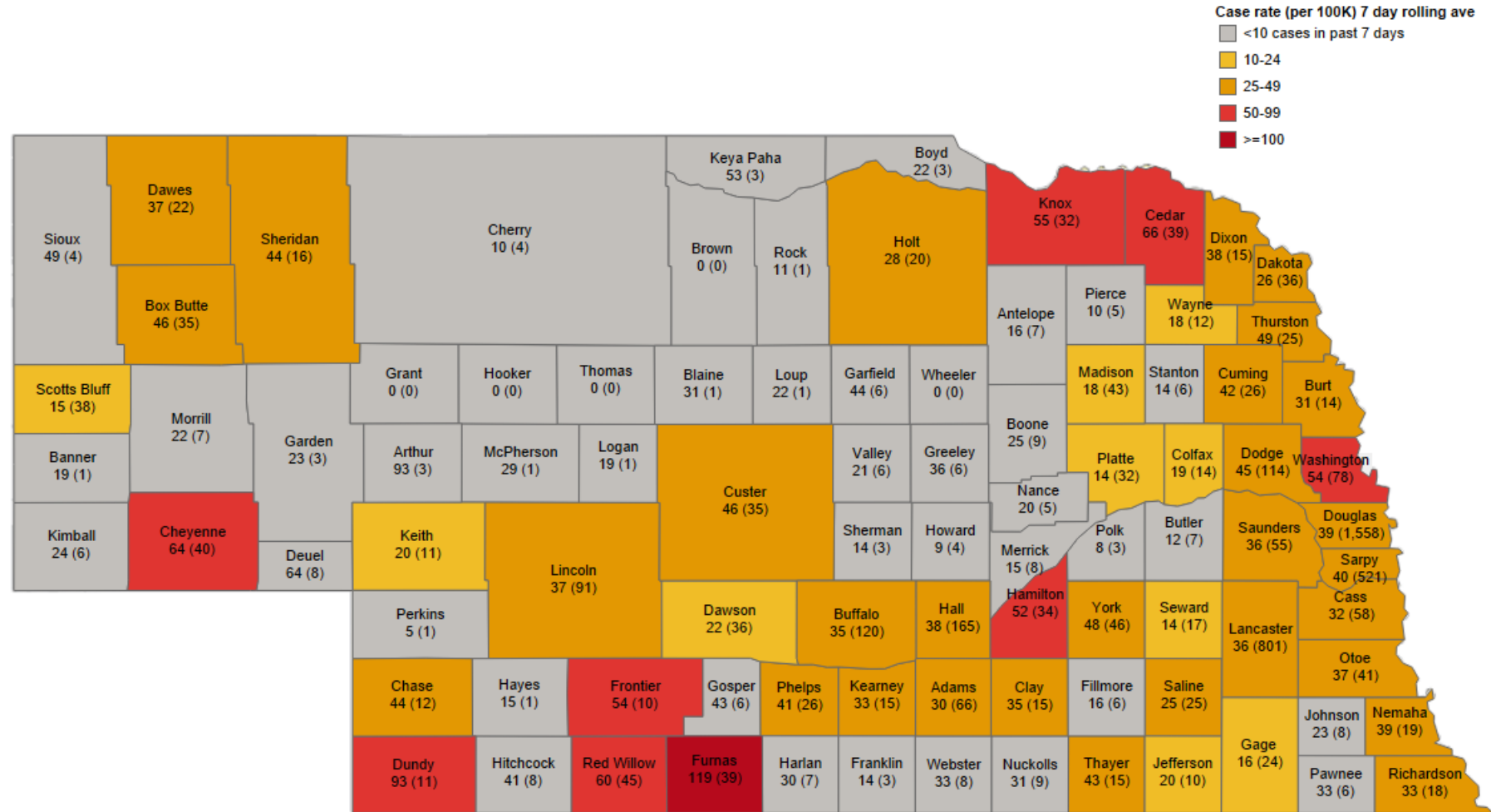
New cases/day/100K (7 day rolling average) by LHD, Nebraska, 4/1/20 to 1/26/2021



Data showing LHD case trend rate based of lab report date
Data Source: Nebraska Electronic Disease Surveillance System (NEDSS)

Case Rate by County

New cases per 100K (7 day rolling average) and number of cases in past 7 days, by county, Nebraska
As of 1/26/2021



Weekly Report

NEBRASKA

Good Life. Great Mission.

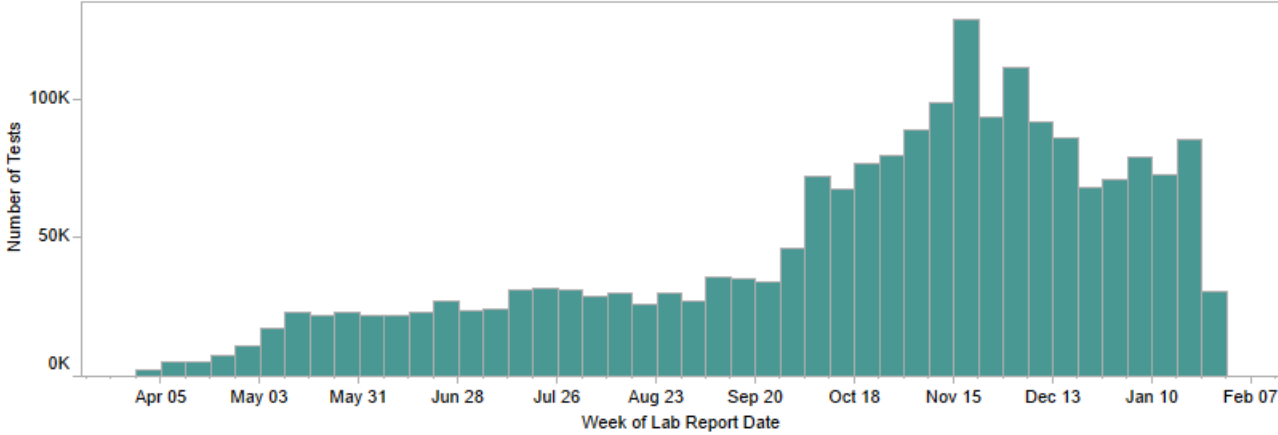
DEPT. OF HEALTH AND HUMAN SERVICES

Helping People Live Better Lives.

Nebraska COVID-19 Weekly Metrics

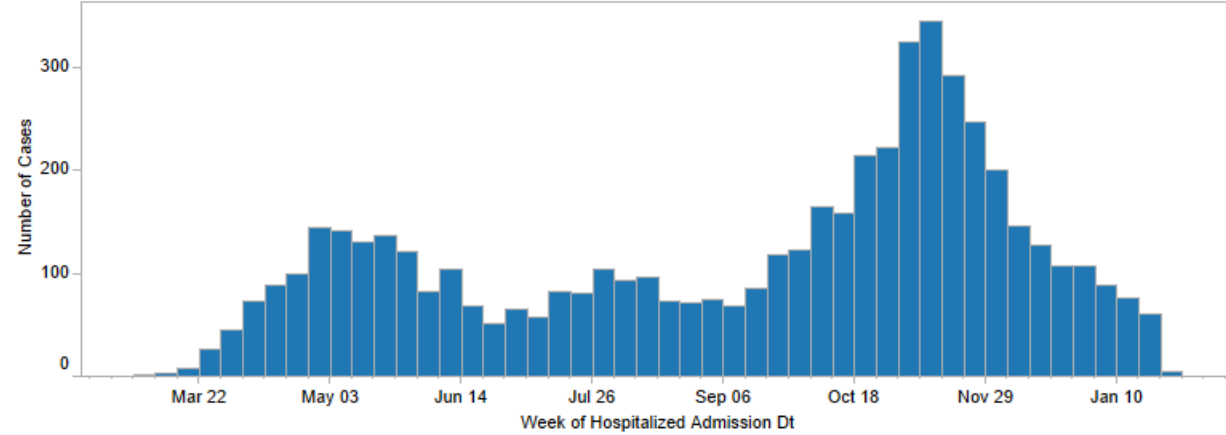
Total Tests
2,054,090

Weekly Tests



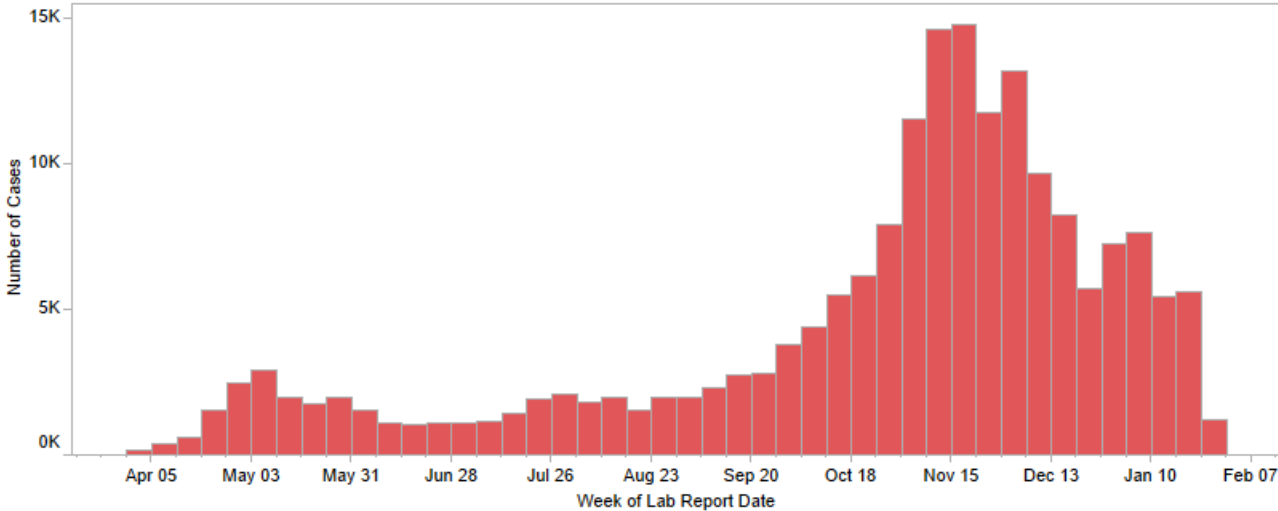
Total Ever Hospitalized
5,929

Weekly New Hospitalizations (Confirmed and Probable cases)



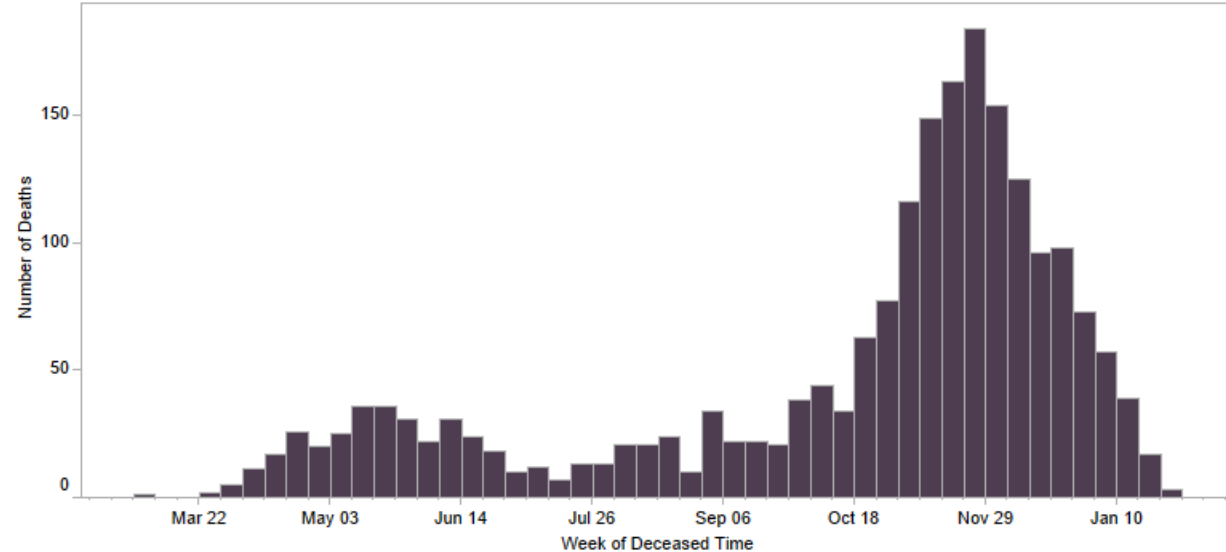
Total Positive Cases
188,074

Weekly Cases



Total Deaths
2,072

Weekly New Deaths (Confirmed and Probable cases)



COVID-19 Tests by Week

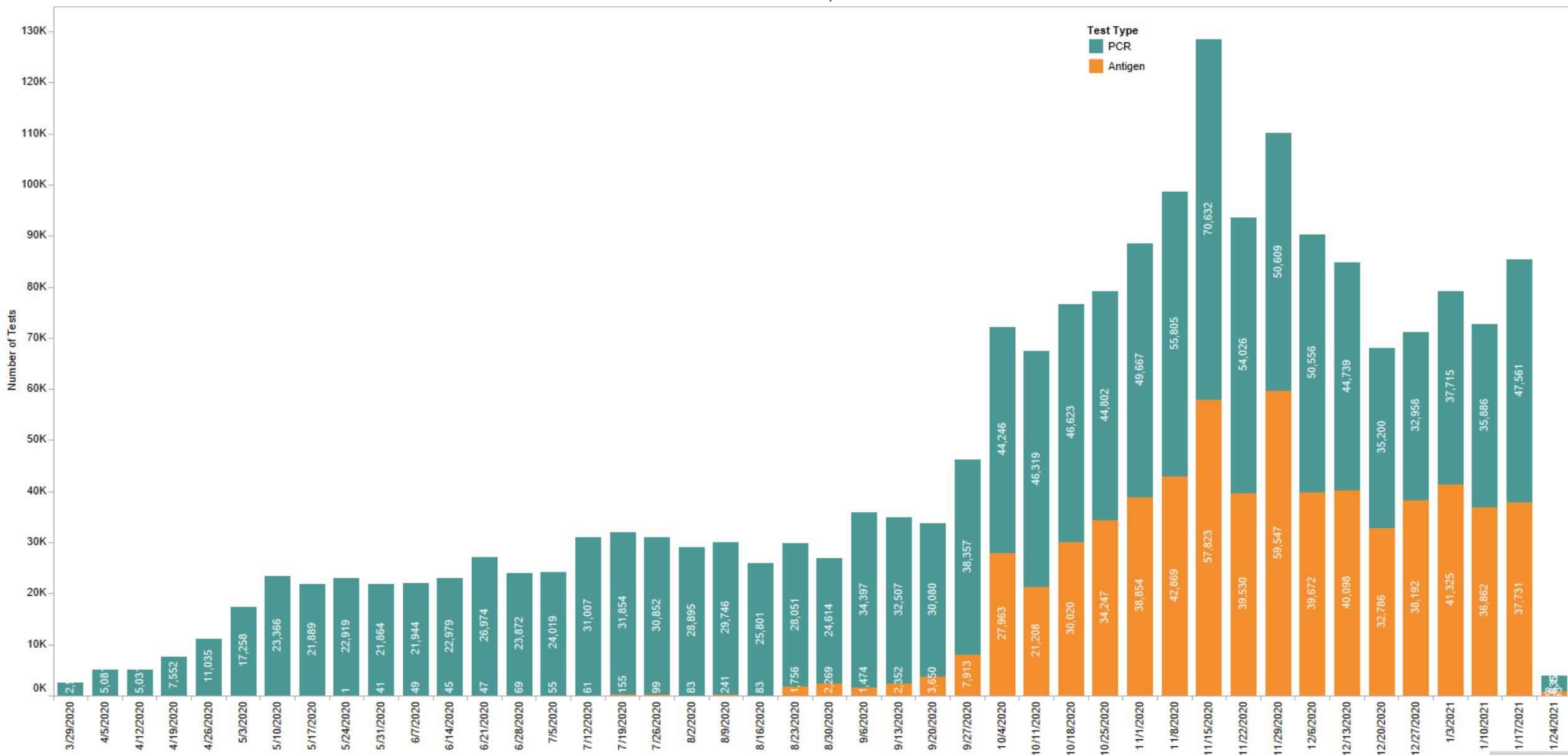
Weekly number of tests performed for COVID-19 by lab report date, as of 1/26/21 (Total= 2,054,090)

Week of Lab Report Date

Test Type

PCR

Antigen

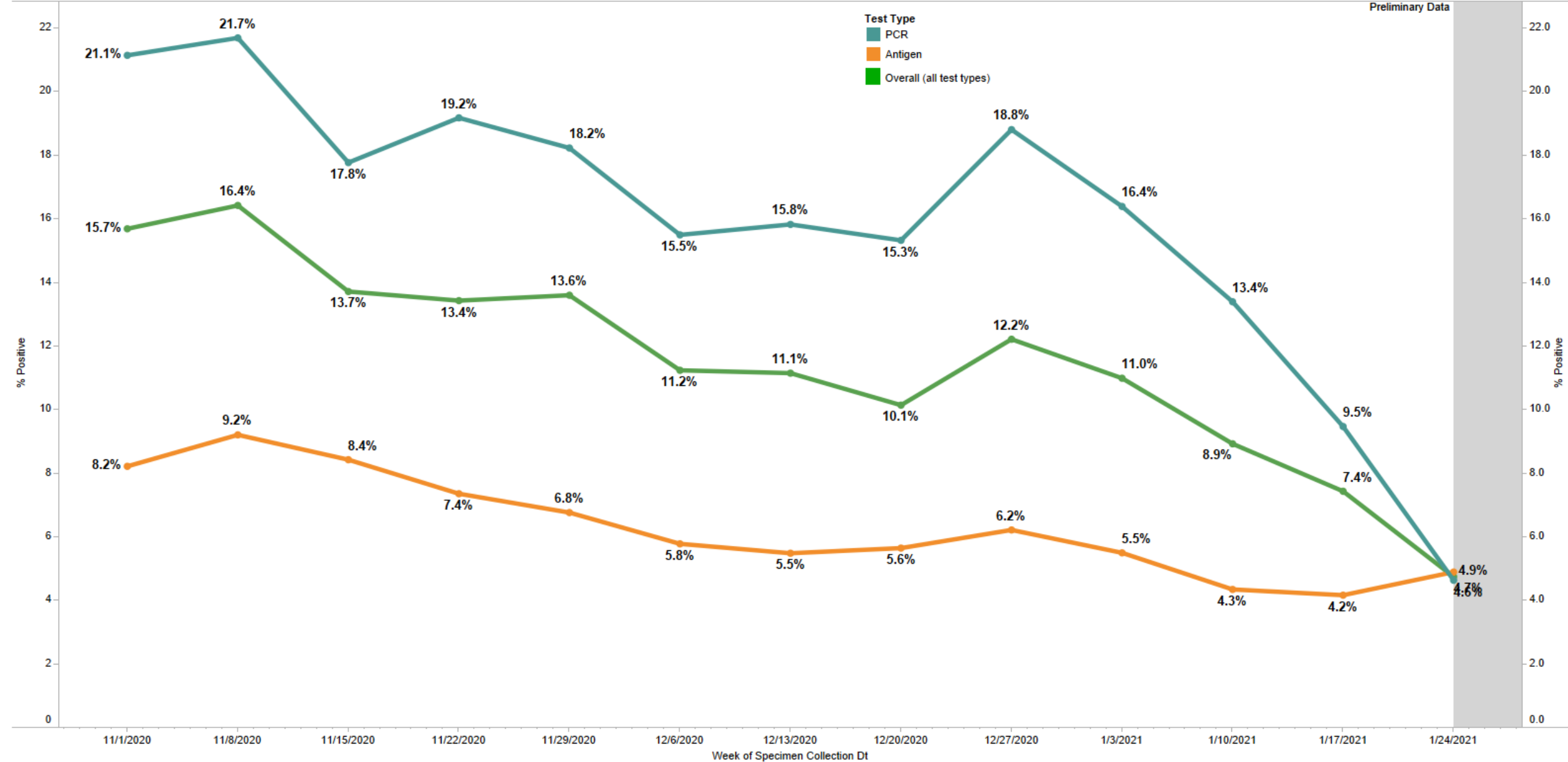


Weekly Test Positivity Rate

Weekly % positive, by specimen collection date and test type, last 90 days, Nebraska

Preliminary Data

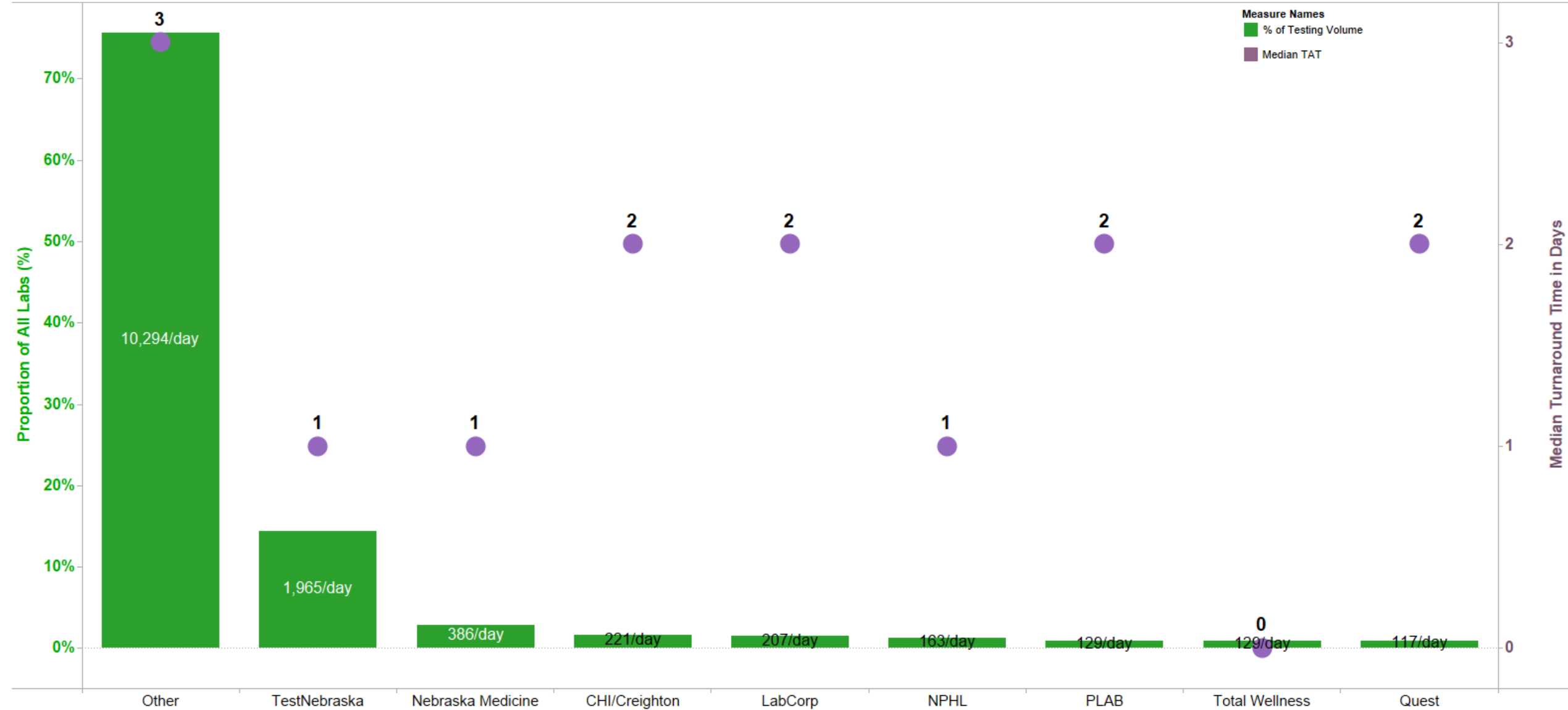
Test Type
PCR
Antigen
Overall (all test types)



Weekly Turn Around Time

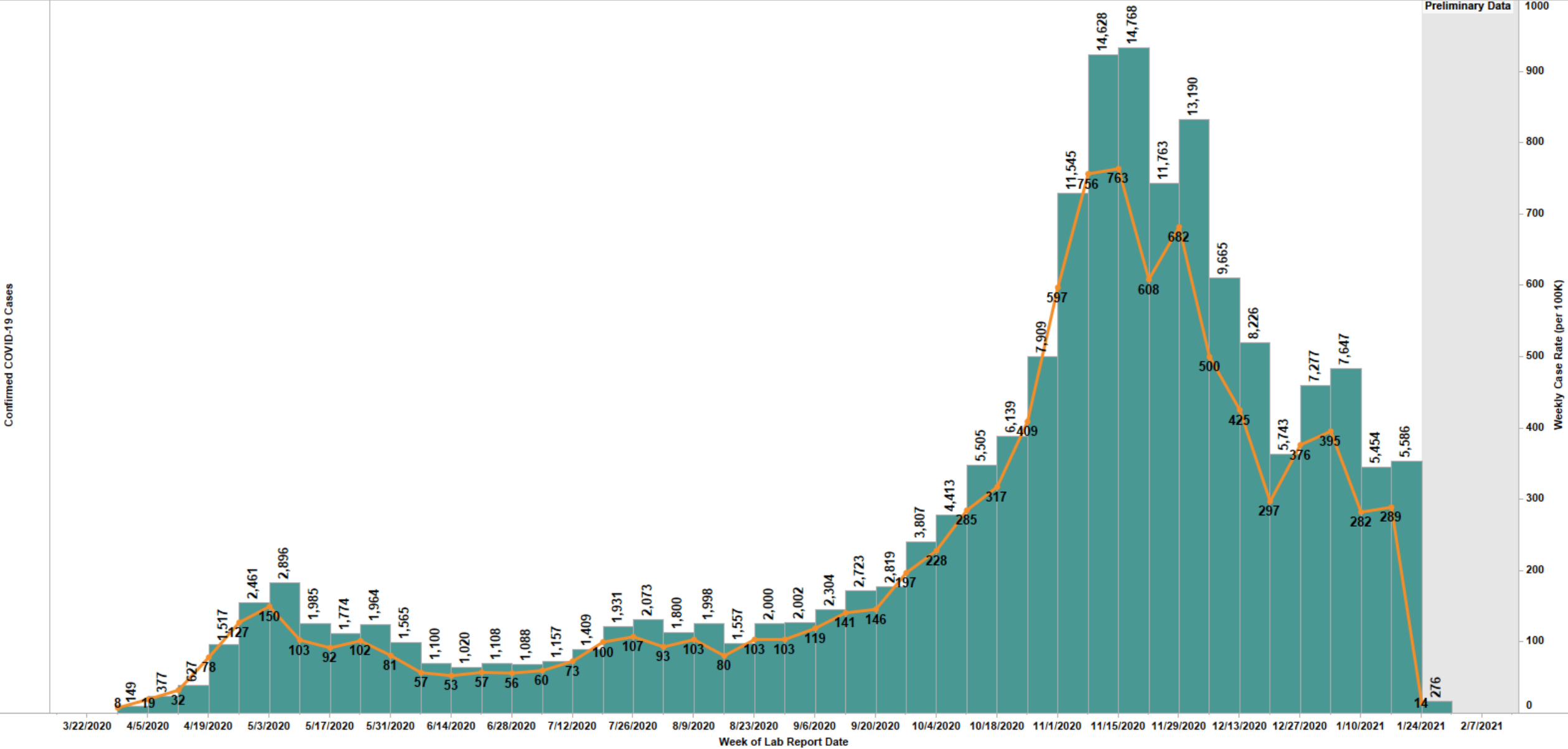
COVID-19 Test Volume & Turnaround Time by major performing laboratories, Last 7 Days, 1/20/21 to 1/26/21
7 day total: 95,281, Overall: 2,054,090

Performing Facility (group)



Weekly COVID-19 Cases

Weekly new cases and weekly case rate (per 100K) by lab report date, Nebraska



Data Source: Nebraska Electronic Disease Surveillance System (NEDSS)

Weekly LHD Metrics

Weekly local health dept trends, by week of lab report date

Weekly Cases, Weekly % Pos, Weekly Case Rate (per 100K)

Weekly Case Rate

125.6  629.8

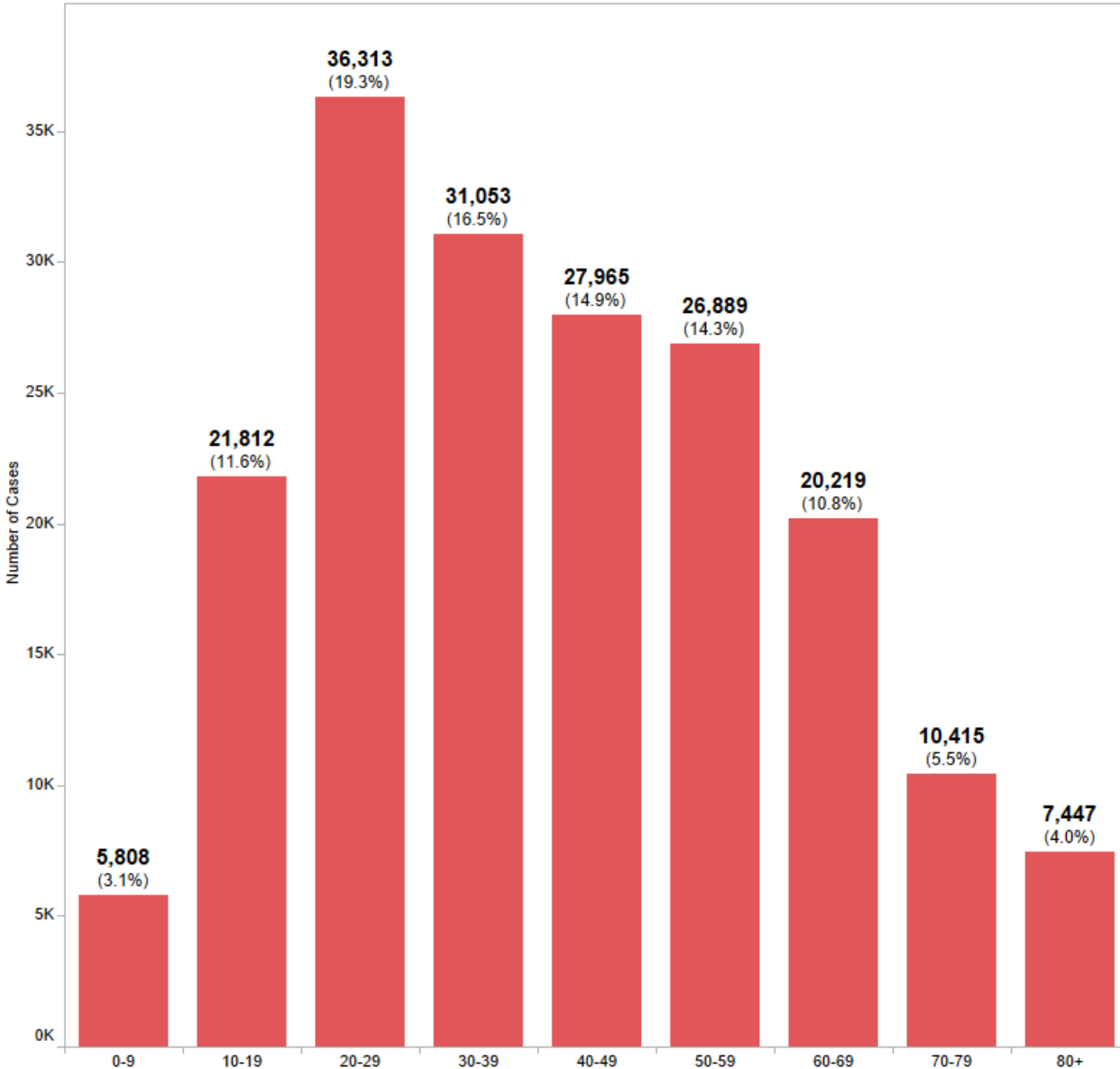
Week of Lab Report Date

LHD short	12/6/2020	12/13/2020	12/20/2020	12/27/2020	1/3/2021	1/10/2021	1/17/2021
Central	Cases: 289 / 12.2% pos Week Rate: 368	Cases: 366 / 14.9% pos Week Rate: 467	Cases: 149 / 8.7% pos Week Rate: 190	Cases: 240 / 10.9% pos Week Rate: 306	Cases: 402 / 16.2% pos Week Rate: 513	Cases: 241 / 11.8% pos Week Rate: 307	Cases: 196 / 8.9% pos Week Rate: 250
Dakota	Cases: 95 / 11.9% pos Week Rate: 474	Cases: 55 / 9.6% pos Week Rate: 275	Cases: 67 / 12.1% pos Week Rate: 335	Cases: 52 / 12.5% pos Week Rate: 260	Cases: 55 / 8.8% pos Week Rate: 275	Cases: 47 / 7.2% pos Week Rate: 235	Cases: 33 / 5.0% pos Week Rate: 165
Douglas	Cases: 3,102 / 12.5% pos Week Rate: 543	Cases: 2,937 / 12.0% pos Week Rate: 514	Cases: 2,018 / 11.0% pos Week Rate: 353	Cases: 2,614 / 13.2% pos Week Rate: 458	Cases: 2,648 / 12.4% pos Week Rate: 463	Cases: 1,744 / 9.4% pos Week Rate: 305	Cases: 1,892 / 10.3% pos Week Rate: 331
East Central	Cases: 191 / 10.1% pos Week Rate: 361	Cases: 97 / 5.6% pos Week Rate: 183	Cases: 105 / 7.3% pos Week Rate: 199	Cases: 93 / 7.5% pos Week Rate: 176	Cases: 135 / 8.9% pos Week Rate: 255	Cases: 104 / 7.8% pos Week Rate: 197	Cases: 95 / 5.7% pos Week Rate: 180
Elkhorn Logan Valley	Cases: 283 / 11.3% pos Week Rate: 502	Cases: 199 / 8.4% pos Week Rate: 353	Cases: 142 / 8.3% pos Week Rate: 252	Cases: 171 / 7.8% pos Week Rate: 304	Cases: 164 / 8.4% pos Week Rate: 291	Cases: 124 / 6.0% pos Week Rate: 220	Cases: 107 / 5.2% pos Week Rate: 190
Four Corners	Cases: 159 / 7.7% pos Week Rate: 360	Cases: 150 / 10.1% pos Week Rate: 339	Cases: 88 / 6.3% pos Week Rate: 199	Cases: 96 / 5.9% pos Week Rate: 217	Cases: 100 / 5.2% pos Week Rate: 226	Cases: 106 / 6.0% pos Week Rate: 240	Cases: 80 / 4.6% pos Week Rate: 181
Lincoln/Lancaster	Cases: 1,360 / 10.3% pos Week Rate: 426	Cases: 1,040 / 9.3% pos Week Rate: 326	Cases: 926 / 9.9% pos Week Rate: 290	Cases: 1,200 / 13.4% pos Week Rate: 376	Cases: 1,182 / 10.0% pos Week Rate: 370	Cases: 936 / 9.6% pos Week Rate: 293	Cases: 1,027 / 5.5% pos Week Rate: 322
Loup Basin	Cases: 132 / 10.5% pos Week Rate: 431	Cases: 112 / 8.2% pos Week Rate: 366	Cases: 52 / 4.4% pos Week Rate: 170	Cases: 47 / 4.9% pos Week Rate: 154	Cases: 95 / 9.9% pos Week Rate: 310	Cases: 64 / 7.5% pos Week Rate: 209	Cases: 62 / 6.0% pos Week Rate: 202
North Central	Cases: 254 / 15.5% pos Week Rate: 570	Cases: 200 / 11.2% pos Week Rate: 449	Cases: 83 / 5.0% pos Week Rate: 186	Cases: 87 / 5.9% pos Week Rate: 195	Cases: 111 / 5.8% pos Week Rate: 249	Cases: 56 / 3.3% pos Week Rate: 126	Cases: 80 / 5.8% pos Week Rate: 179
Northeast	Cases: 193 / 15.8% pos Week Rate: 630	Cases: 154 / 11.4% pos Week Rate: 502	Cases: 69 / 7.5% pos Week Rate: 225	Cases: 59 / 5.7% pos Week Rate: 193	Cases: 53 / 7.0% pos Week Rate: 173	Cases: 63 / 5.5% pos Week Rate: 206	Cases: 83 / 9.1% pos Week Rate: 271
Panhandle	Cases: 385 / 11.6% pos Week Rate: 461	Cases: 266 / 10.3% pos Week Rate: 318	Cases: 194 / 7.1% pos Week Rate: 232	Cases: 150 / 5.6% pos Week Rate: 179	Cases: 162 / 6.4% pos Week Rate: 194	Cases: 123 / 5.2% pos Week Rate: 147	Cases: 152 / 5.4% pos Week Rate: 182
Public Health Solutions	Cases: 310 / 11.8% pos Week Rate: 582	Cases: 218 / 10.6% pos Week Rate: 409	Cases: 128 / 7.2% pos Week Rate: 240	Cases: 146 / 8.9% pos Week Rate: 274	Cases: 143 / 6.4% pos Week Rate: 269	Cases: 139 / 8.1% pos Week Rate: 261	Cases: 130 / 7.0% pos Week Rate: 244
Sarpy/Cass	Cases: 1,135 / 13.4% pos Week Rate: 532	Cases: 978 / 13.3% pos Week Rate: 458	Cases: 716 / 12.4% pos Week Rate: 335	Cases: 1,030 / 15.8% pos Week Rate: 483	Cases: 951 / 13.8% pos Week Rate: 446	Cases: 659 / 10.8% pos Week Rate: 309	Cases: 690 / 10.7% pos Week Rate: 323
South Heartland	Cases: 253 / 17.4% pos Week Rate: 560	Cases: 163 / 11.6% pos Week Rate: 361	Cases: 88 / 10.5% pos Week Rate: 195	Cases: 128 / 13.1% pos Week Rate: 283	Cases: 158 / 13.7% pos Week Rate: 350	Cases: 118 / 9.7% pos Week Rate: 261	Cases: 108 / 8.0% pos Week Rate: 239
Southeast	Cases: 236 / 12.4% pos Week Rate: 612	Cases: 181 / 13.0% pos Week Rate: 470	Cases: 127 / 11.0% pos Week Rate: 330	Cases: 156 / 7.8% pos Week Rate: 405	Cases: 167 / 10.2% pos Week Rate: 433	Cases: 100 / 5.8% pos Week Rate: 260	Cases: 111 / 9.7% pos Week Rate: 288
Southwest	Cases: 231 / 16.1% pos Week Rate: 604	Cases: 183 / 8.6% pos Week Rate: 478	Cases: 167 / 12.8% pos Week Rate: 437	Cases: 169 / 13.1% pos Week Rate: 442	Cases: 185 / 14.3% pos Week Rate: 484	Cases: 130 / 11.4% pos Week Rate: 340	Cases: 117 / 7.3% pos Week Rate: 306
Three Rivers	Cases: 434 / 11.8% pos Week Rate: 550	Cases: 355 / 12.1% pos Week Rate: 450	Cases: 259 / 11.0% pos Week Rate: 328	Cases: 354 / 14.0% pos Week Rate: 449	Cases: 414 / 11.8% pos Week Rate: 525	Cases: 312 / 10.4% pos Week Rate: 396	Cases: 239 / 9.6% pos Week Rate: 303
Two Rivers	Cases: 355 / 9.3% pos Week Rate: 365	Cases: 322 / 9.3% pos Week Rate: 332	Cases: 234 / 8.1% pos Week Rate: 241	Cases: 290 / 10.5% pos Week Rate: 299	Cases: 319 / 9.4% pos Week Rate: 328	Cases: 216 / 5.9% pos Week Rate: 222	Cases: 212 / 6.2% pos Week Rate: 218
West Central	Cases: 194 / 14.5% pos Week Rate: 510	Cases: 197 / 14.6% pos Week Rate: 518	Cases: 81 / 10.9% pos Week Rate: 213	Cases: 114 / 11.0% pos Week Rate: 300	Cases: 125 / 11.6% pos Week Rate: 329	Cases: 106 / 13.1% pos Week Rate: 279	Cases: 91 / 8.1% pos Week Rate: 239

COVID-19 Cases by Age Group

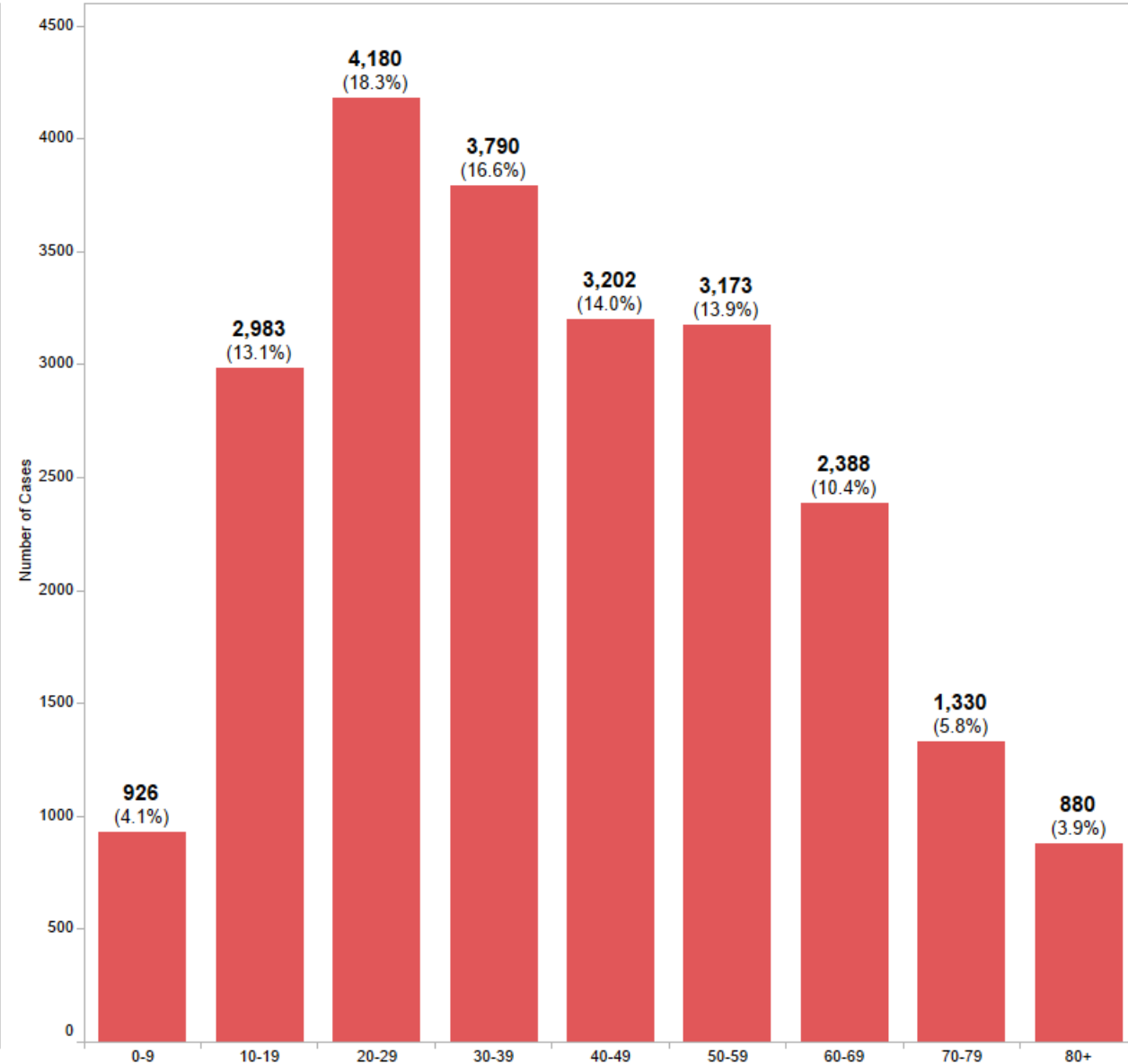
Number and percentage of COVID-19 cases, by age group, Overall

Age Calc (group) 10y



Number and percentage of COVID-19 cases, by age group, last 30 days

Age Calc (group) 10y

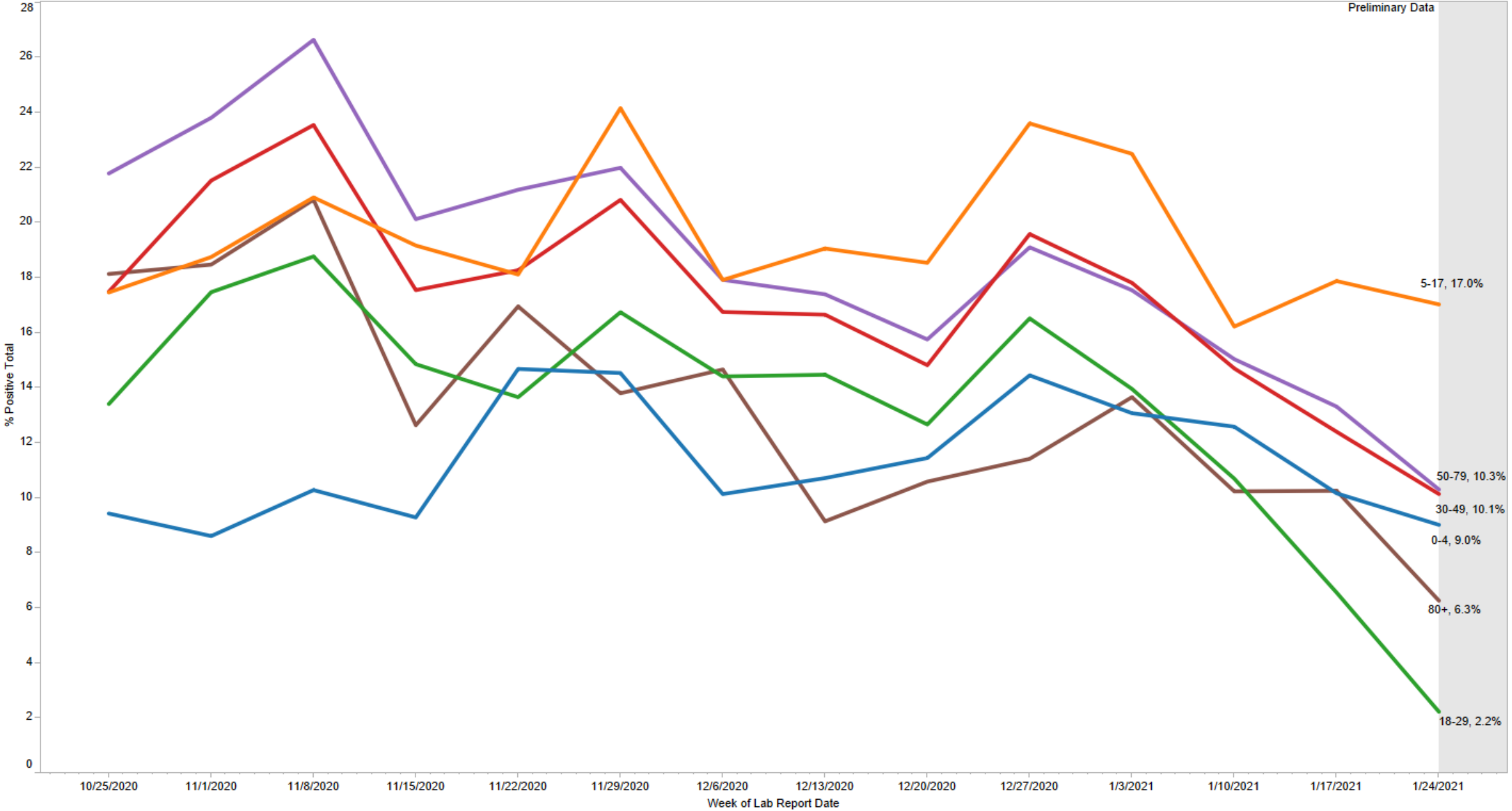


Test Positivity By Age

Weekly percent positivity (PCR-only) by age group and lab report date, last 90 days, Nebraska

- Age Group
- 0-4
- 5-17
- 18-29
- 30-49
- 50-79
- 80+

Preliminary Data



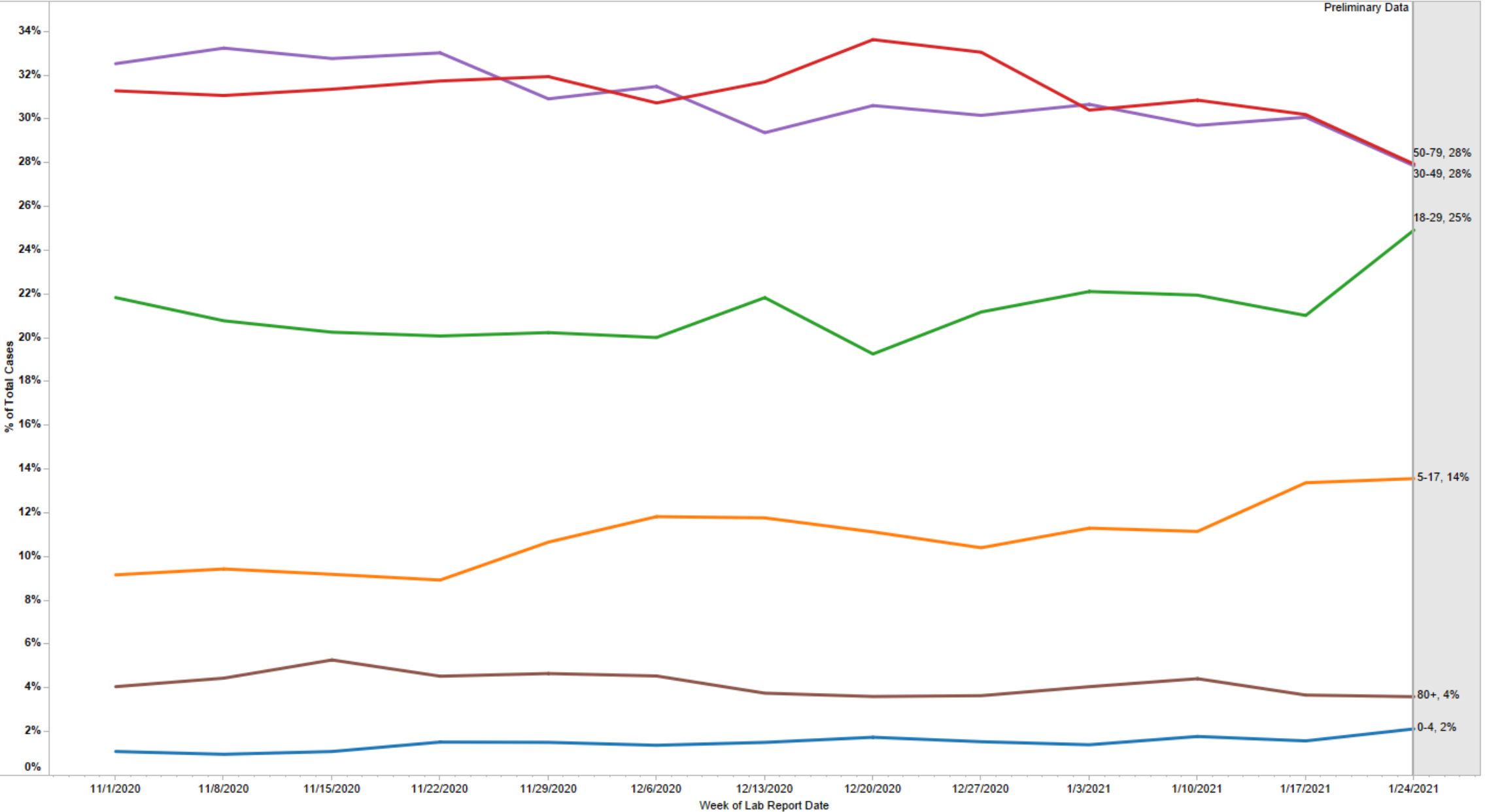
Proportion of Cases by Age Group

Proportion of new COVID-19 cases by age group, by week of lab report date, last 90 days

Age Calc (group) 6a

- 0-4
- 5-17
- 18-29
- 30-49
- 50-79
- 80+

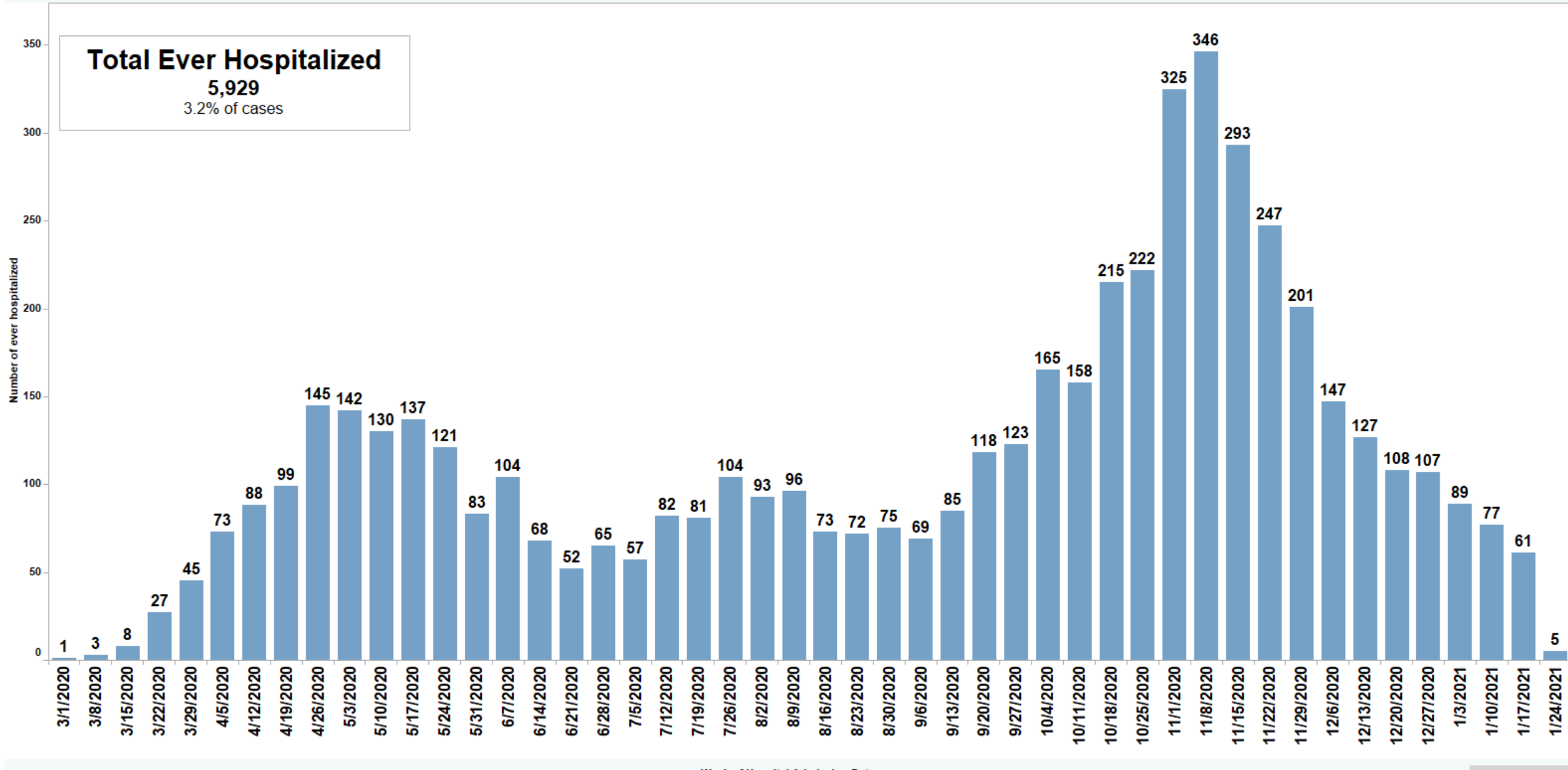
Preliminary Data



50-79, 28%
30-49, 28%
18-29, 25%
5-17, 14%
80+, 4%
0-4, 2%

Hospitalizations by Week

Weekly new hospitalizations among COVID-19 cases (confirmed and probable), by admission date, Nebraska



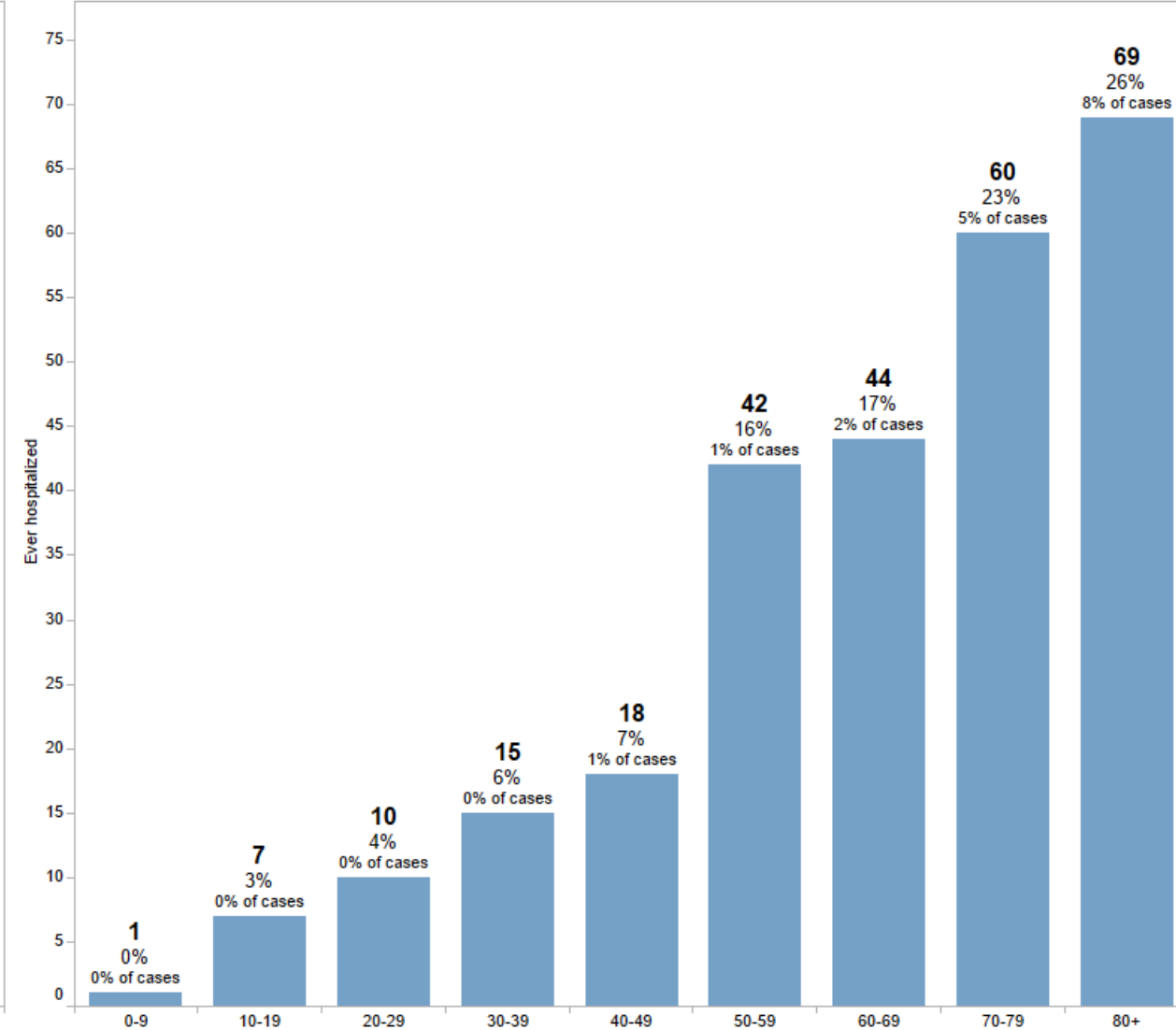
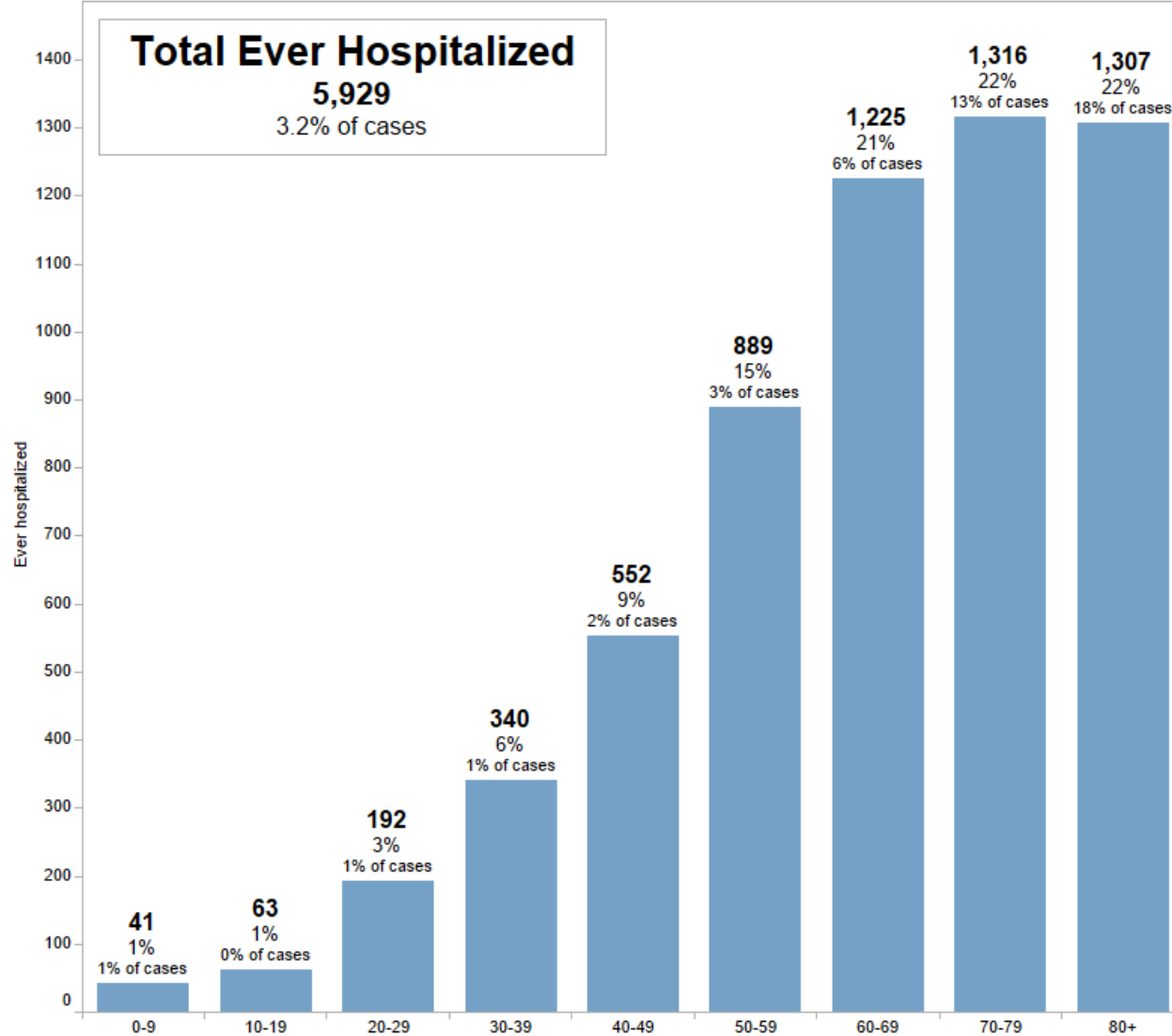
Hospitalizations by Age Group

Ever hospitalized among COVID-19 cases (confirmed and probable), by age group, Overall (N=5,929)
(Number, percent, and proportion)

Ever hospitalized among COVID-19 cases (confirmed and probable), by age group, last 30 days (N=266)
(Number, percent, and proportion)

Age Calc (group) 10y

Age Calc (group) 10y



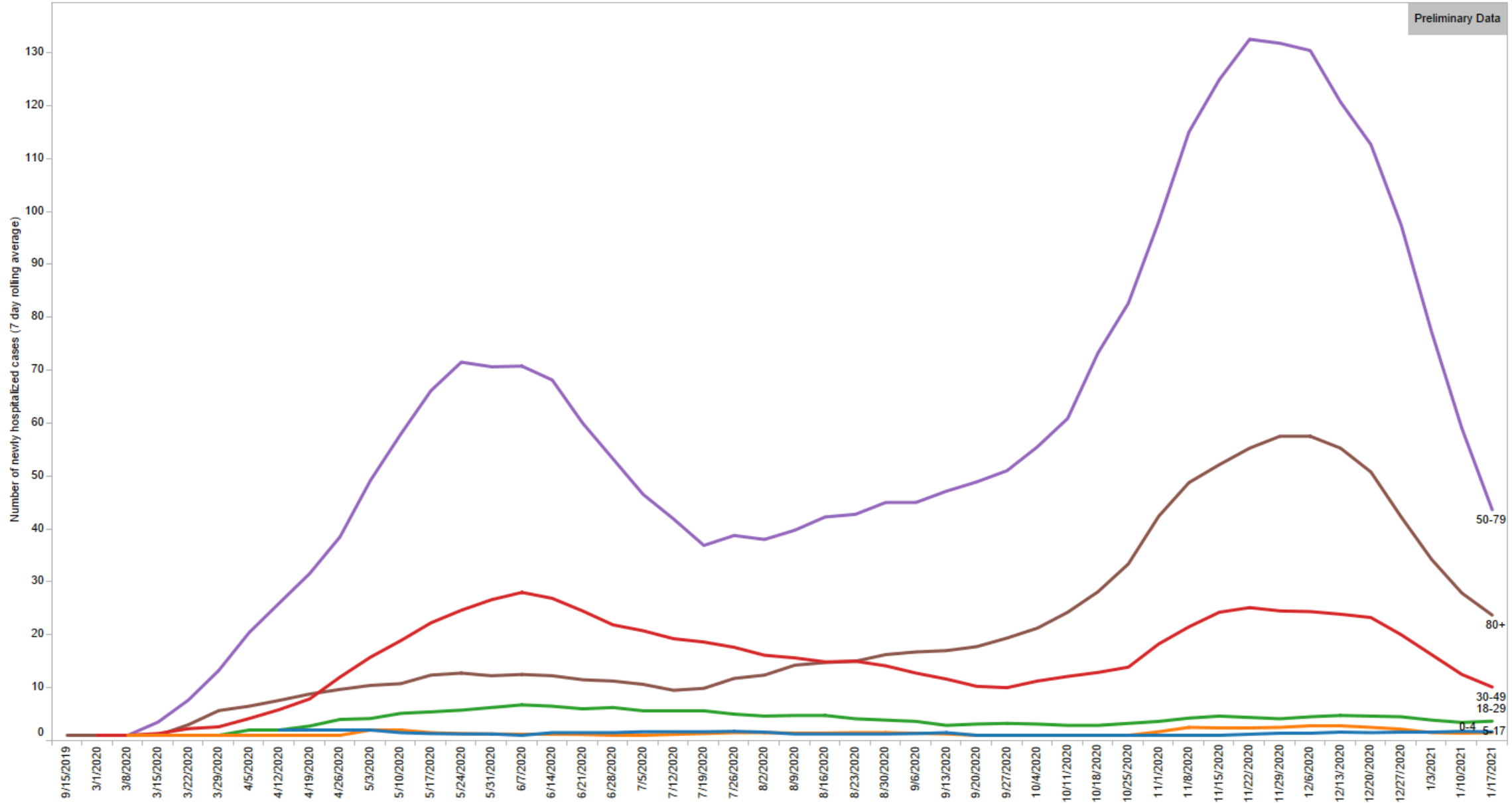
Hospitalizations by Age Group Trends

Number of new hospitalizations among confirmed and probable cases (7 day rolling average), by age group and week of admission date, Nebraska

- Age Calc (group) 6a
- 0-4
 - 5-17
 - 18-29
 - 30-49
 - 50-79
 - 80+

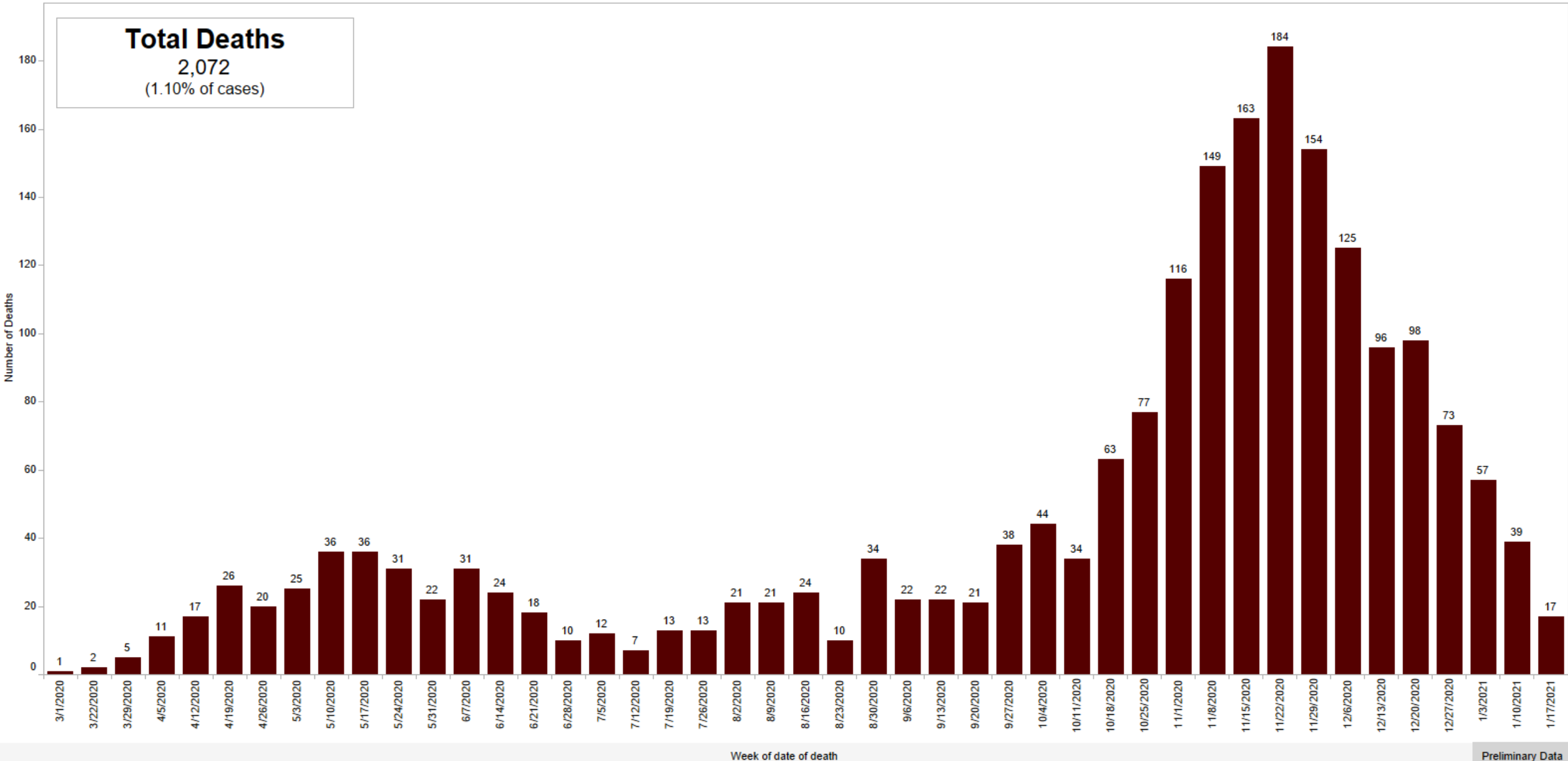
Preliminary Data

Week of Hospitalized Admission Date



Deaths by Week

Weekly new deaths among COVID-19 confirmed and probable cases, by date of death, Nebraska



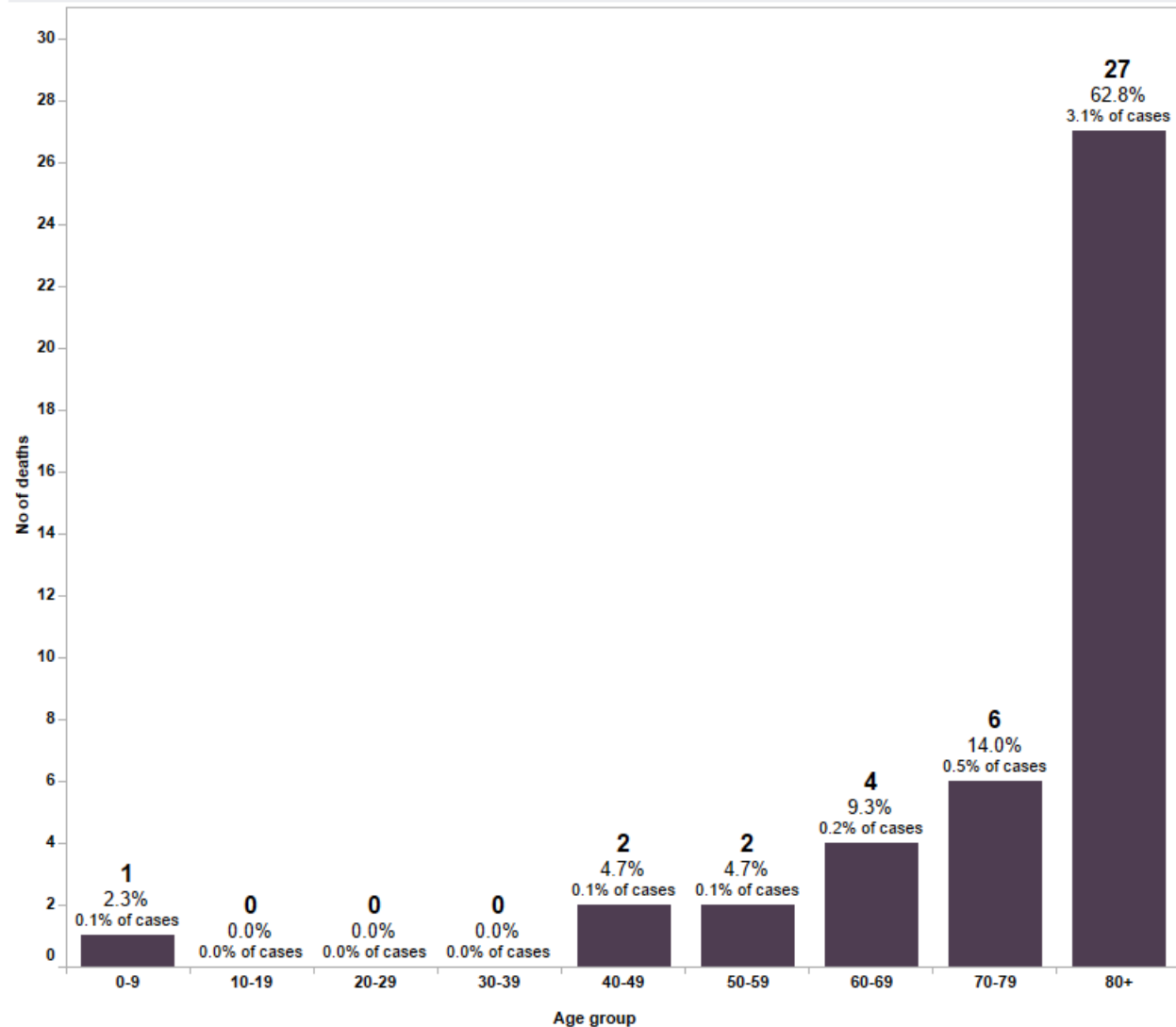
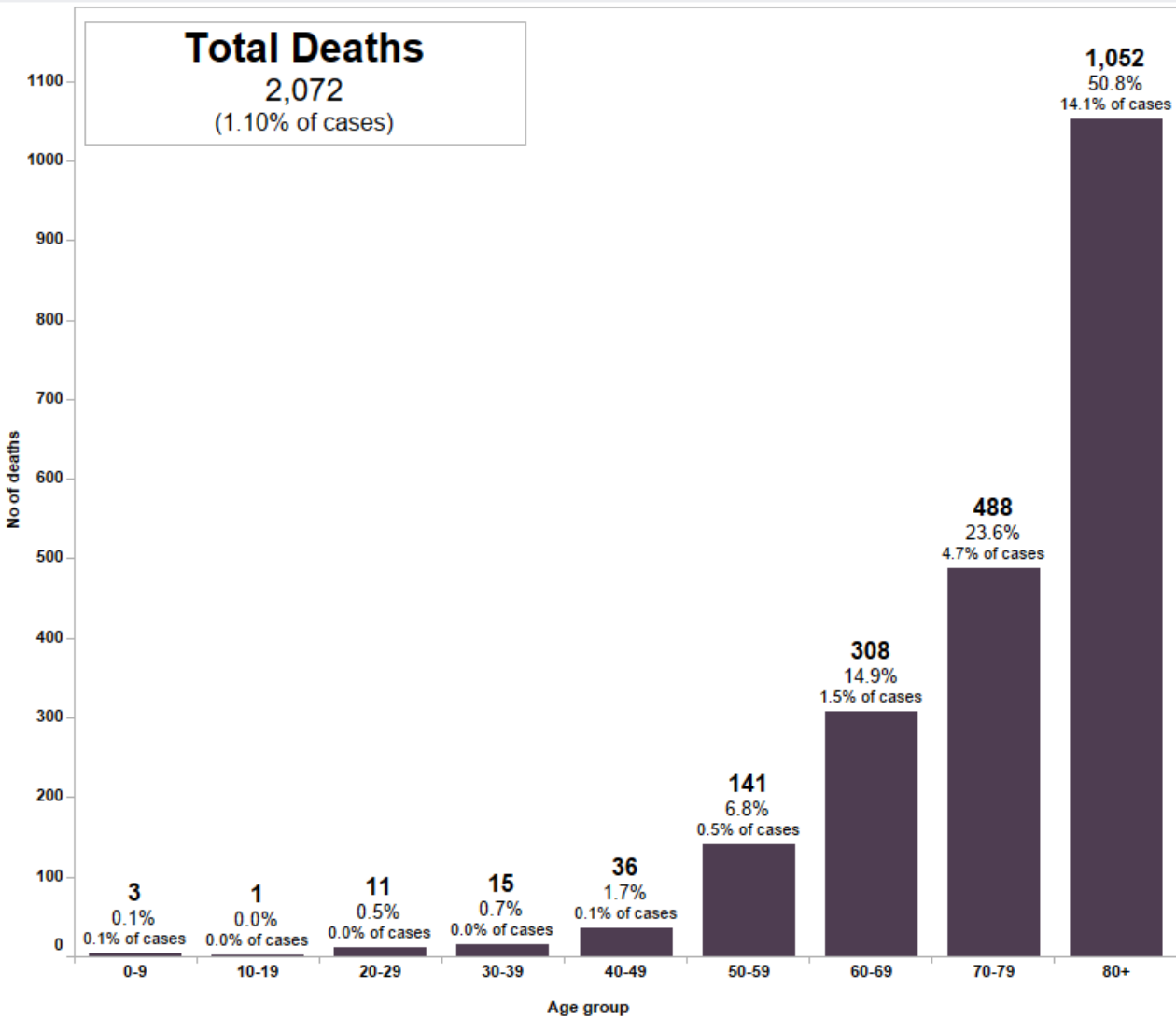
Preliminary Data

Data shows confirmed and probable deaths by date of death
Data Source: Nebraska Electronic Disease Surveillance System (NEDSS)

Deaths by Age Group

Deaths among COVID-19 cases (confirmed and probable), by age group, Overall (n=2,072)
(Number, percent, and proportion)

Deaths among COVID-19 cases (confirmed and probable), by age group, last 30 days (n=43)
(Number, percent, and proportion)



*Confirmed and probable cases
Data Source: Nebraska Electronic Disease Surveillance System (NEDSS)

Thank You

NEBRASKA

Good Life. Great Mission.

DEPT. OF HEALTH AND HUMAN SERVICES

Helping People Live Better Lives.