



# NHA Quest for Excellence Award

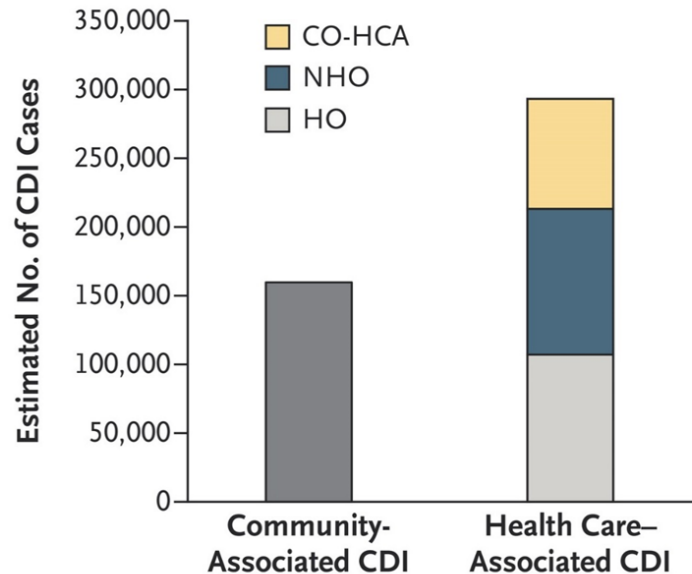
## *Clostridium difficile Process Improvement- Time to Make a “Diff”erence*

*Barb Petersen MSN, APRN Chief Quality Officer*

# What is *C. difficile*?

- *Clostridium difficile* (*C. difficile*) is a bacterium that causes diarrhea and more serious intestinal conditions such as colitis.
- Symptoms include
  - Watery diarrhea
  - Fever
  - Loss of appetite
  - Nausea
  - Abdominal pain or tenderness

# Estimated Annual US Burden



## 453,000 CDI cases

- 293,000 healthcare-associated
- 107,000 hospital-onset
- 104,000 nursing home-onset
- 81,000 community-onset, healthcare-facility associated
- 160,000 community-associated
- 82% associated with outpatient healthcare exposure

**Estimated U.S. Burden of CDI, According to the Location of Stool Collection and Inpatient Health Care Exposure, 2011.**

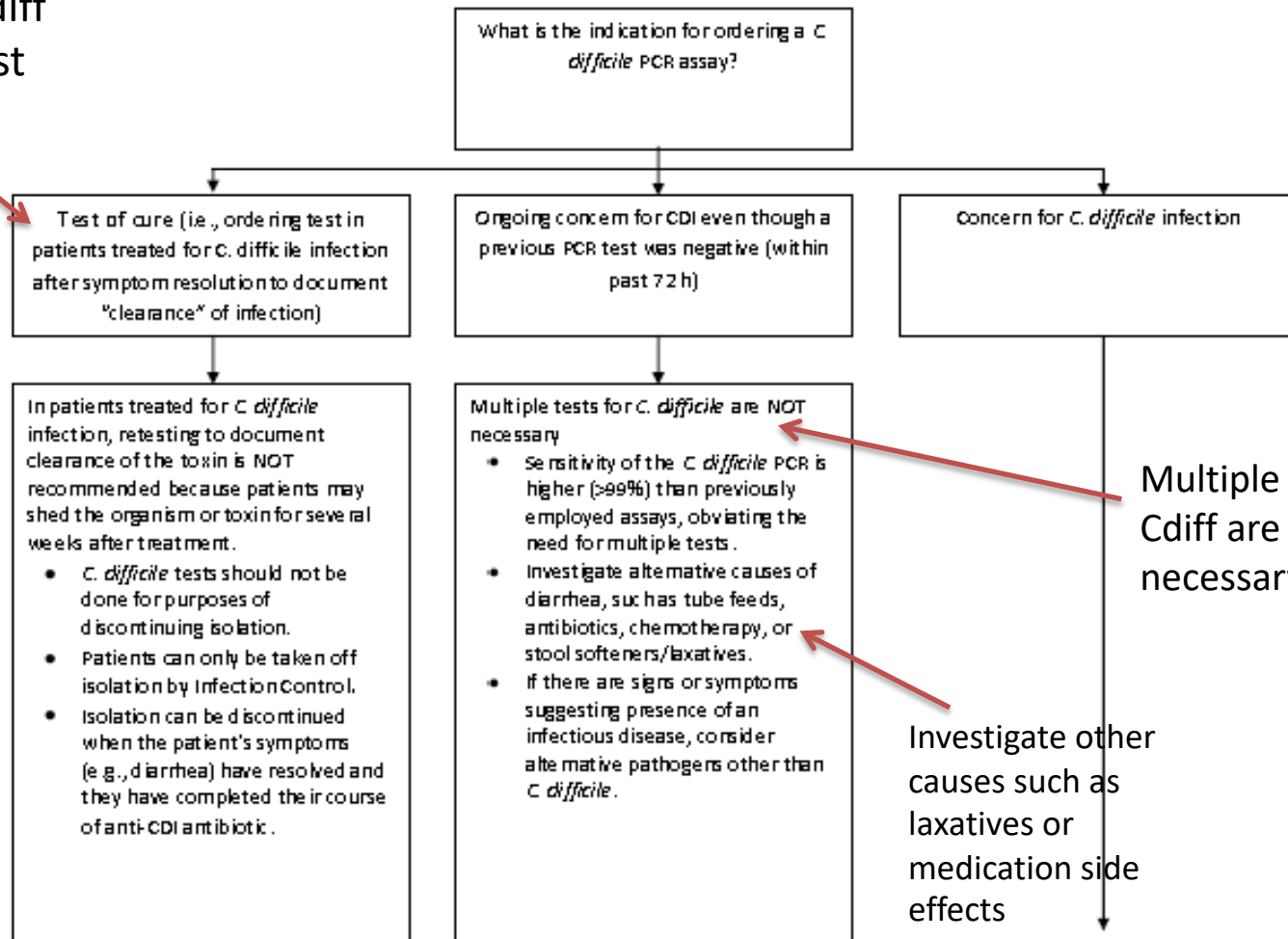
**CO-HCA:** Community onset healthcare-associated  
**NHO:** Nursing home onset  
**HO:** Hospital onset

Lessa et al. N Engl J Med 2015; 372(9):825-834.

# Testing Algorithm

## *C. difficile* Testing Algorithm

Don't Use Cdiff Testing to test for Cure

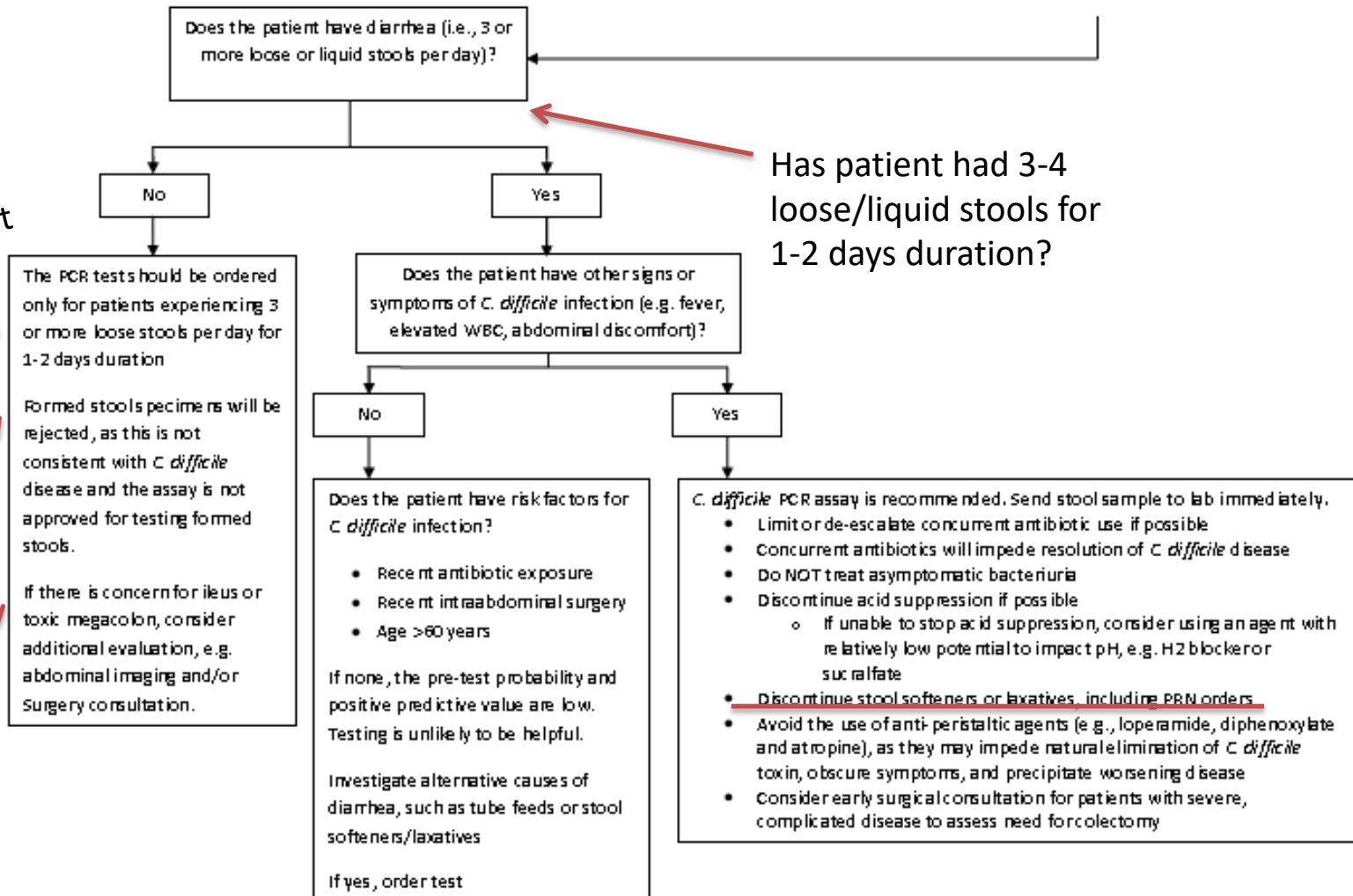


Multiple tests for Cdiff are NOT necessary

Investigate other causes such as laxatives or medication side effects

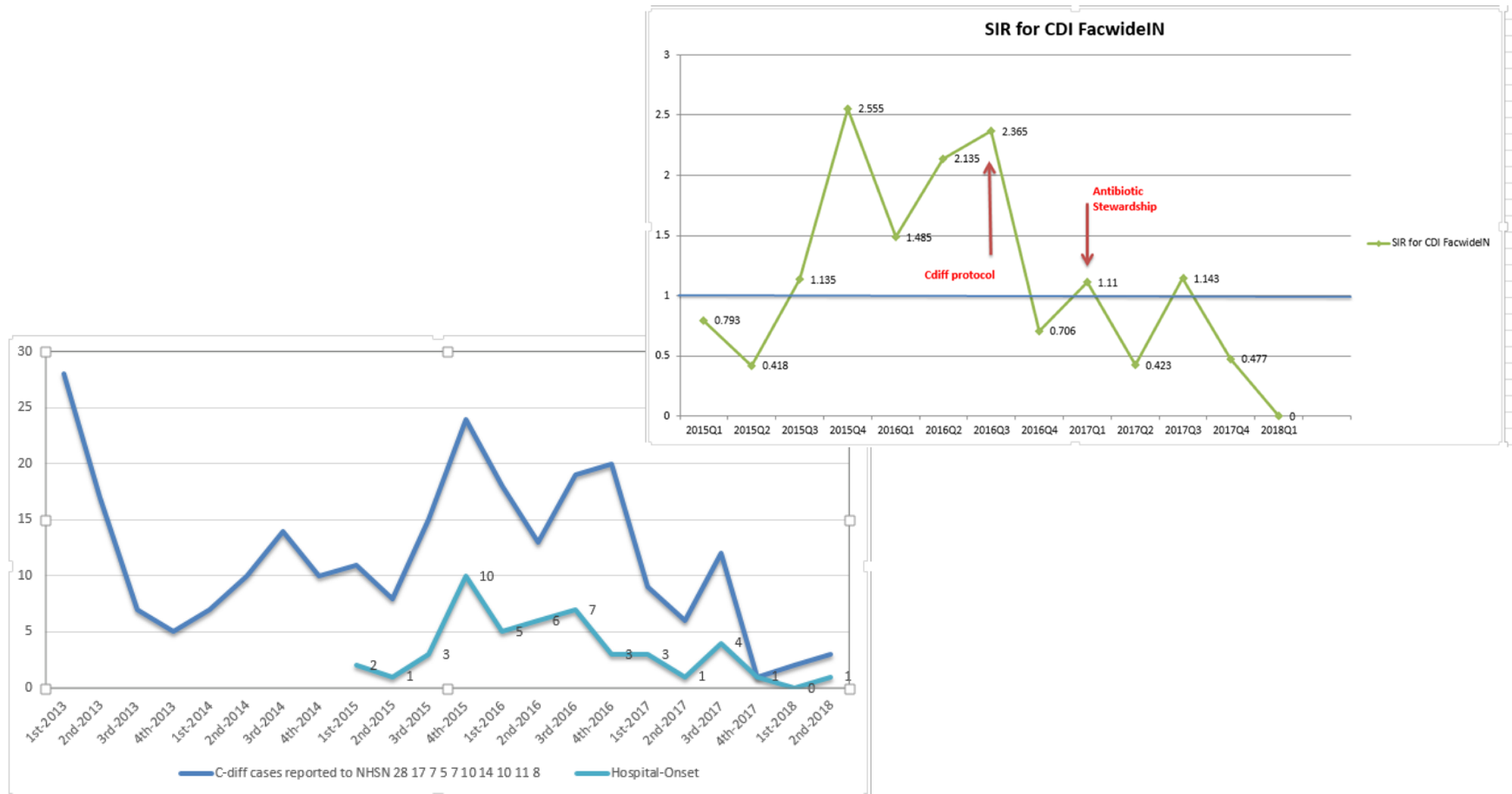


Important



Has patient had 3-4 loose/liquid stools for 1-2 days duration?

# Results



# Lessons Learned

- Education to all staff
  - Multidisciplinary process
  - Interactive education model
- Set clear boundaries and goals for team in charter to avoid drift
- Physician champion critical for success
- Partner with lab and pathology

# Next Steps

- Expand to outpatient services
- Asymptomatic findings on labs/ X-ray chest imaging education regarding antibiotic treatment
  - Chest X-ray over treatment
  - Asymptomatic bacteremia over treatment